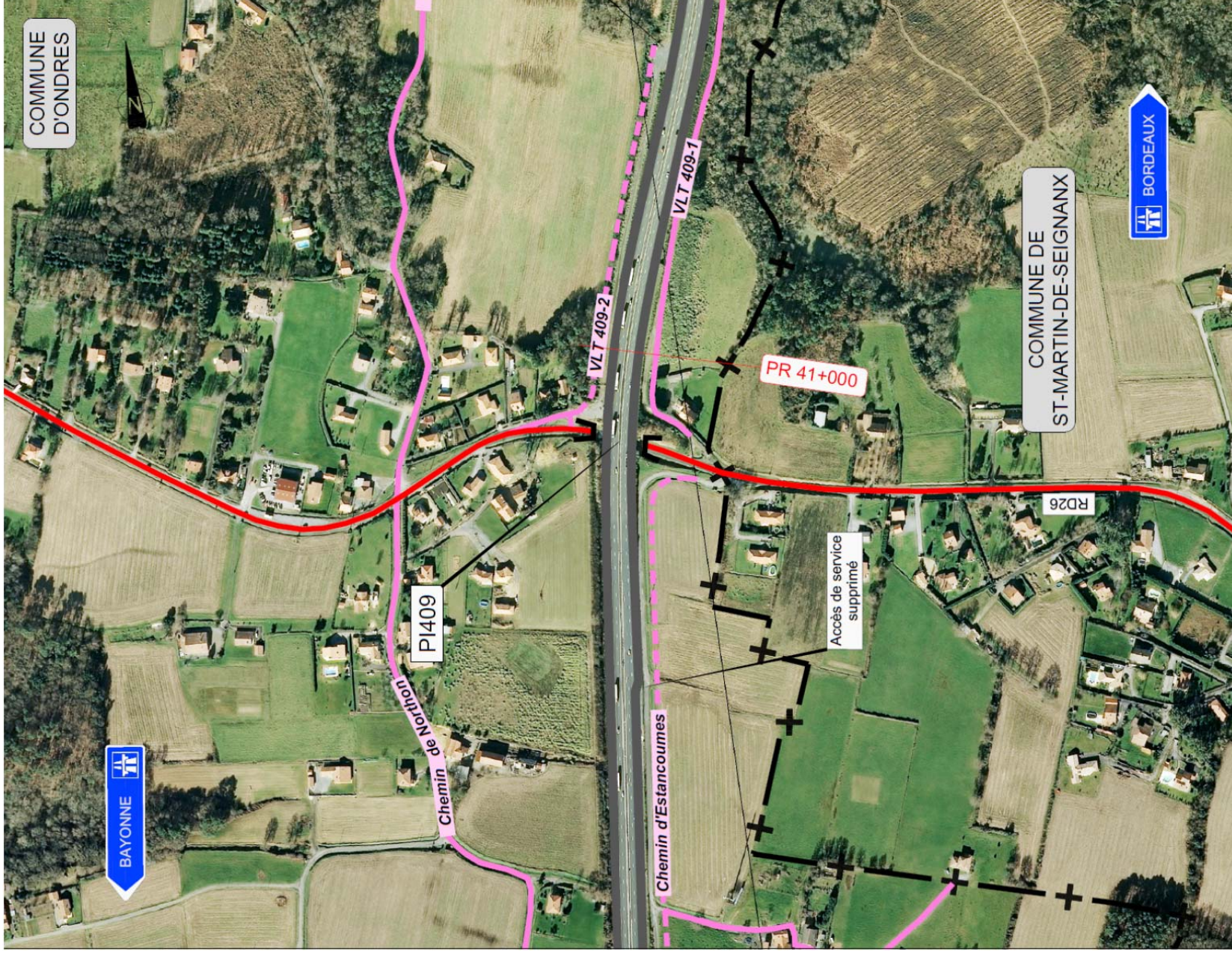
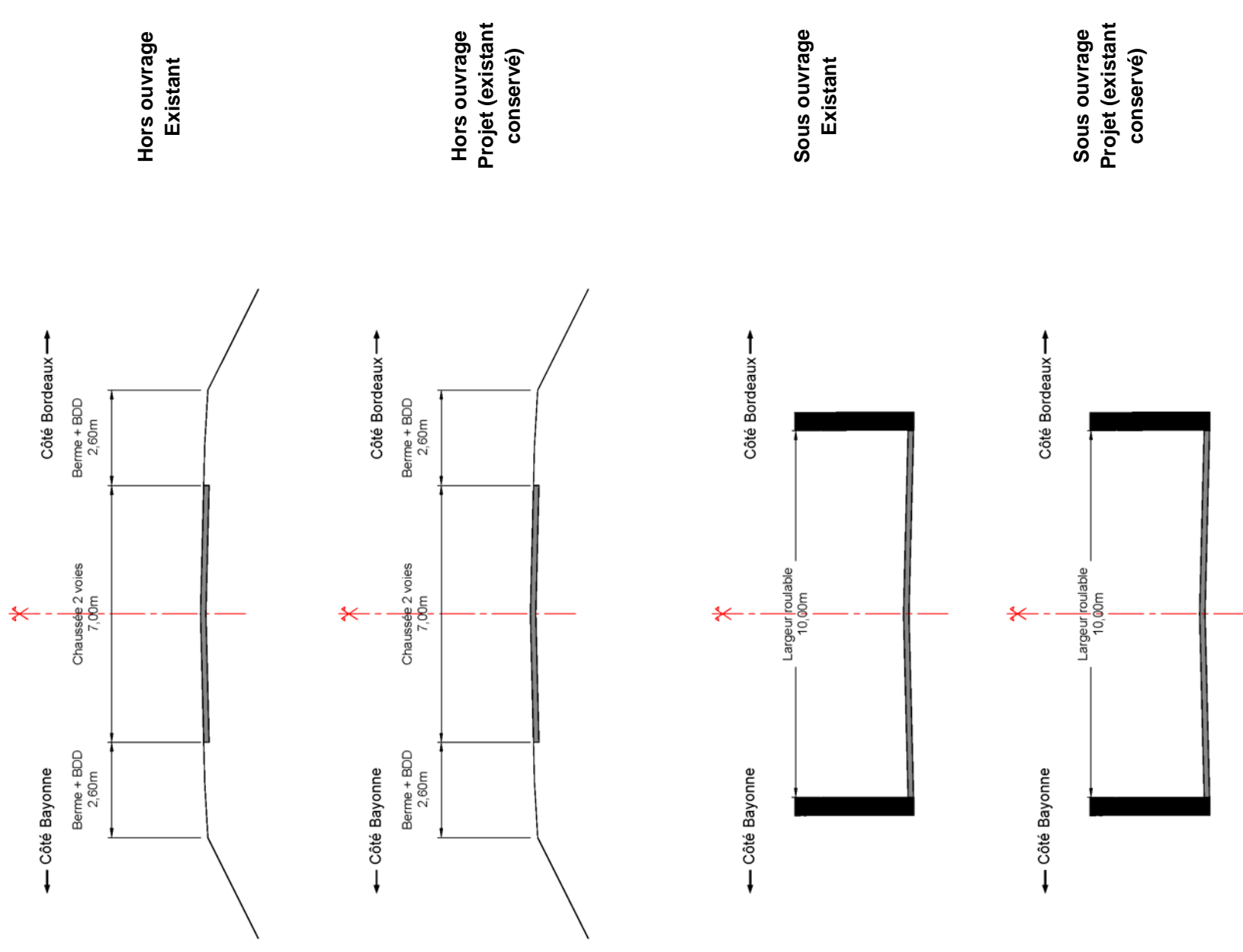


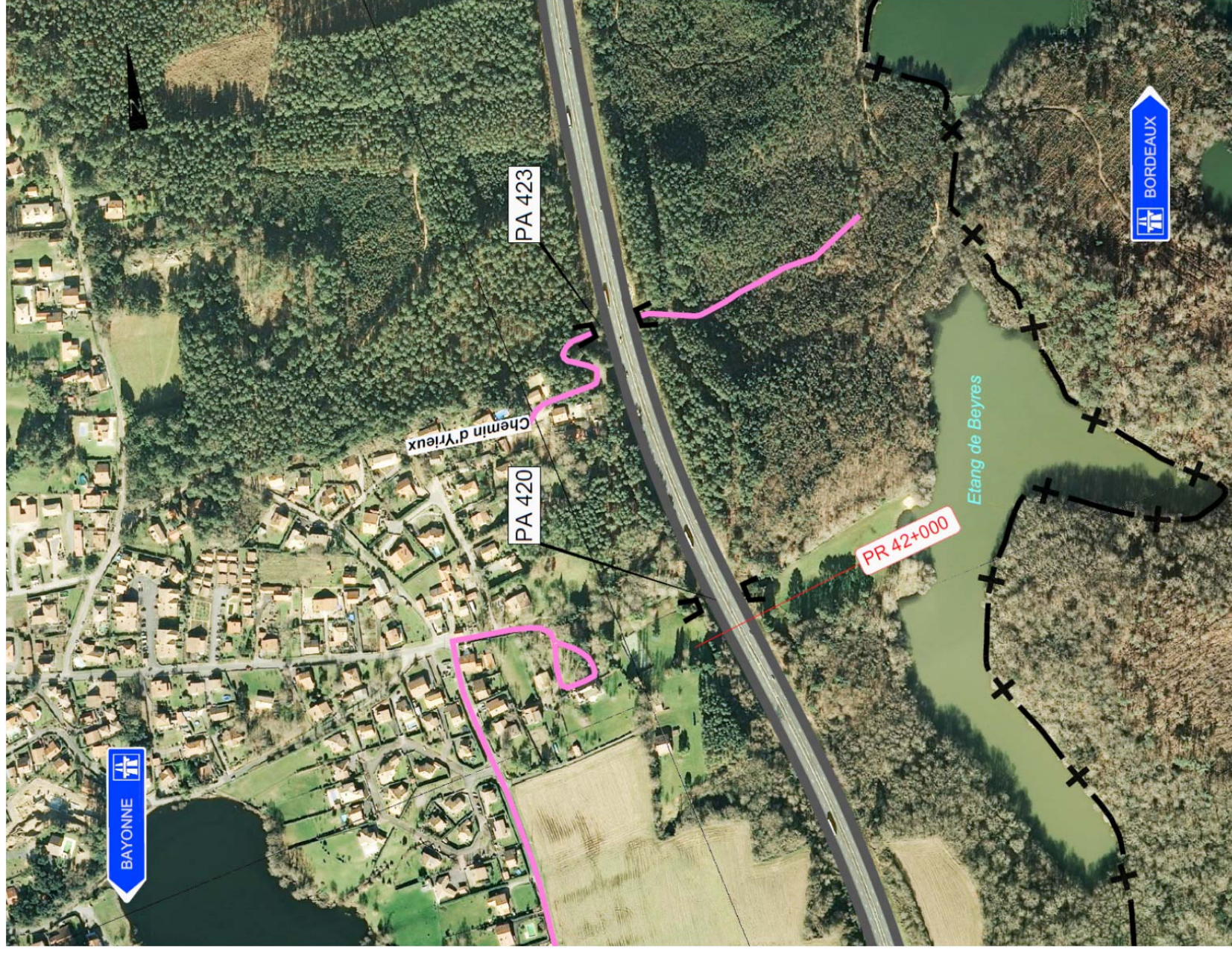
PLAN DE SITUATION



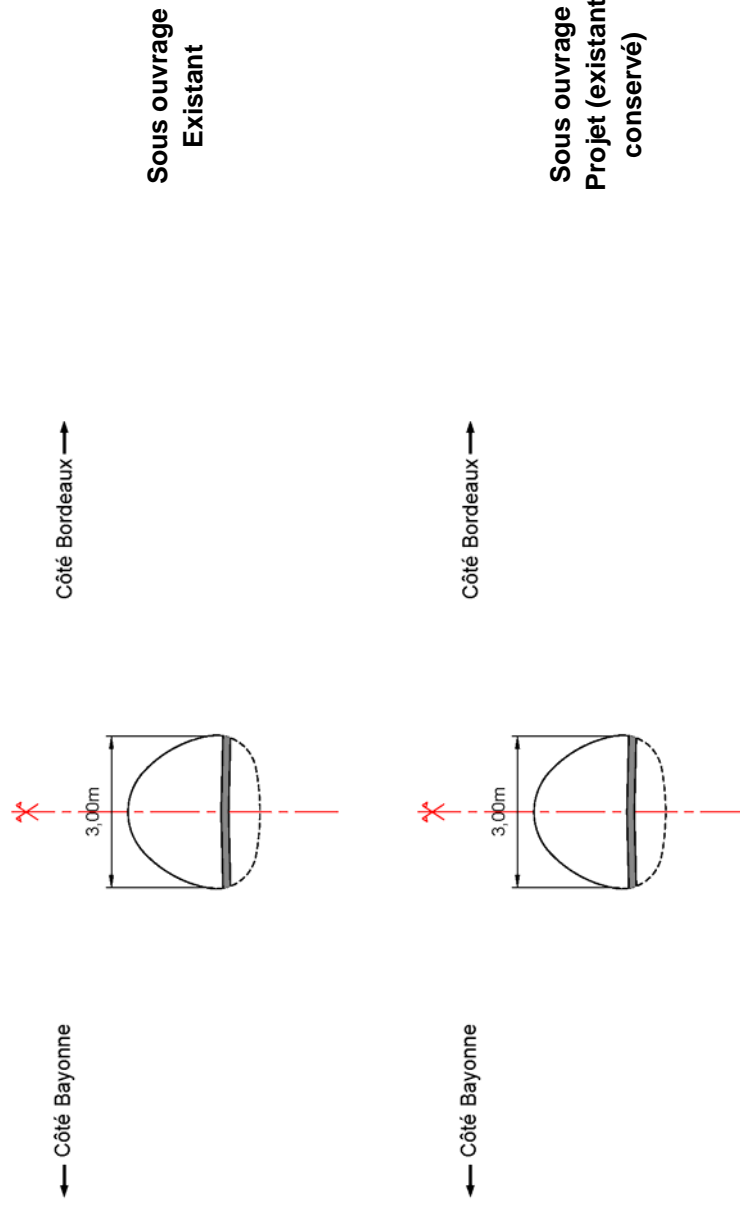
PROFILS EN TRAVERS



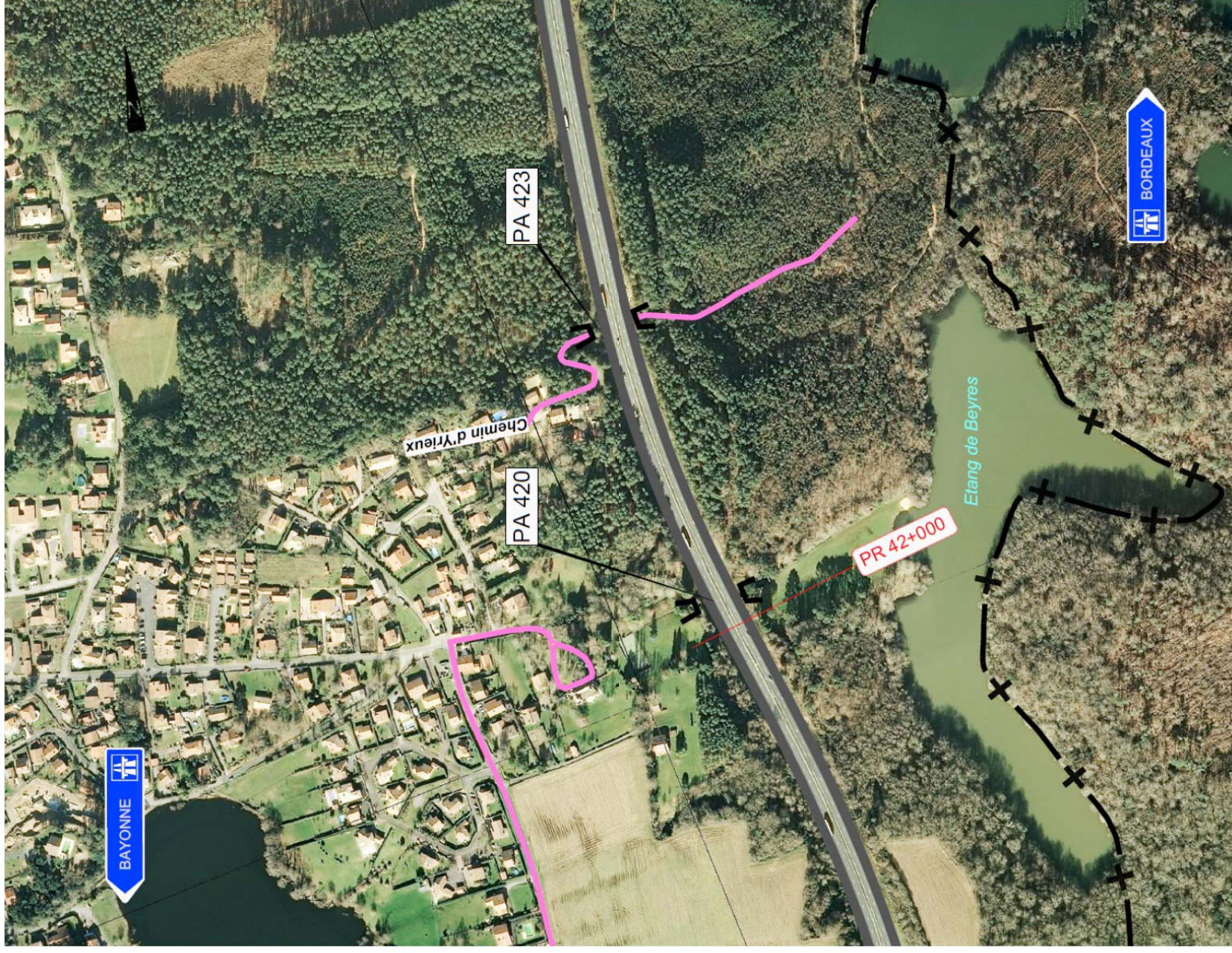
PLAN DE SITUATION



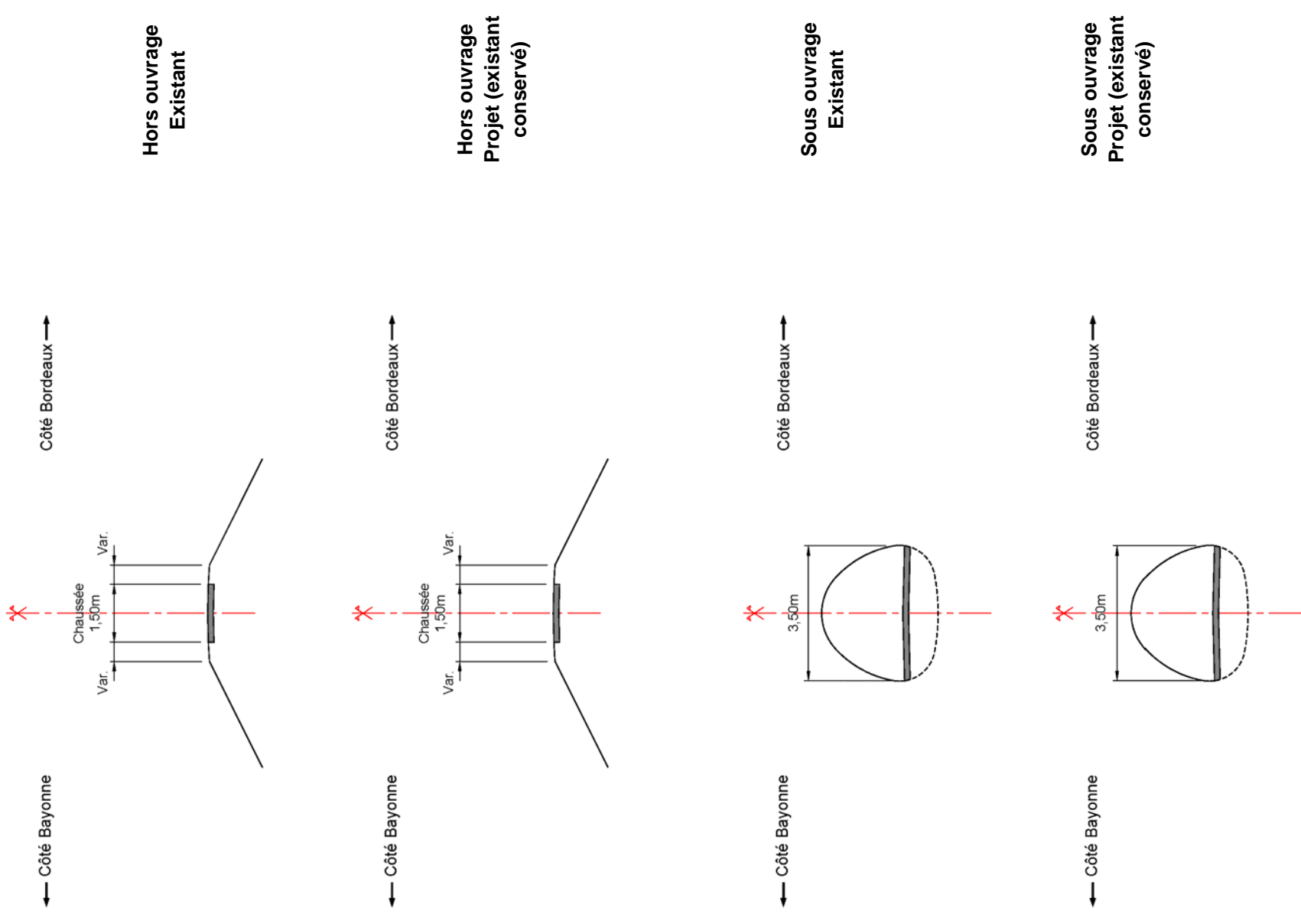
PROFILS EN TRAVERS



PLAN DE SITUATION



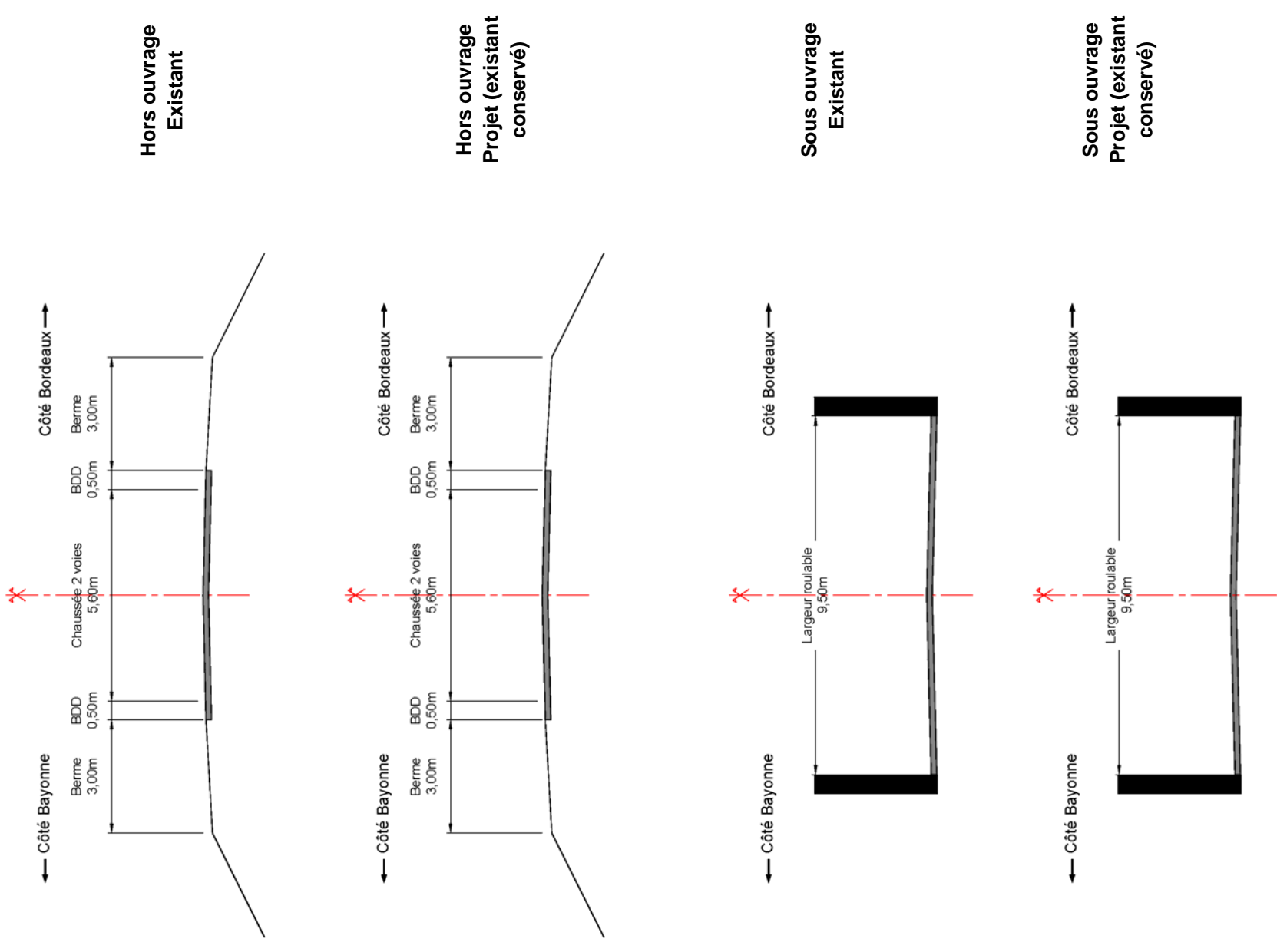
PROFILS EN TRAVERS



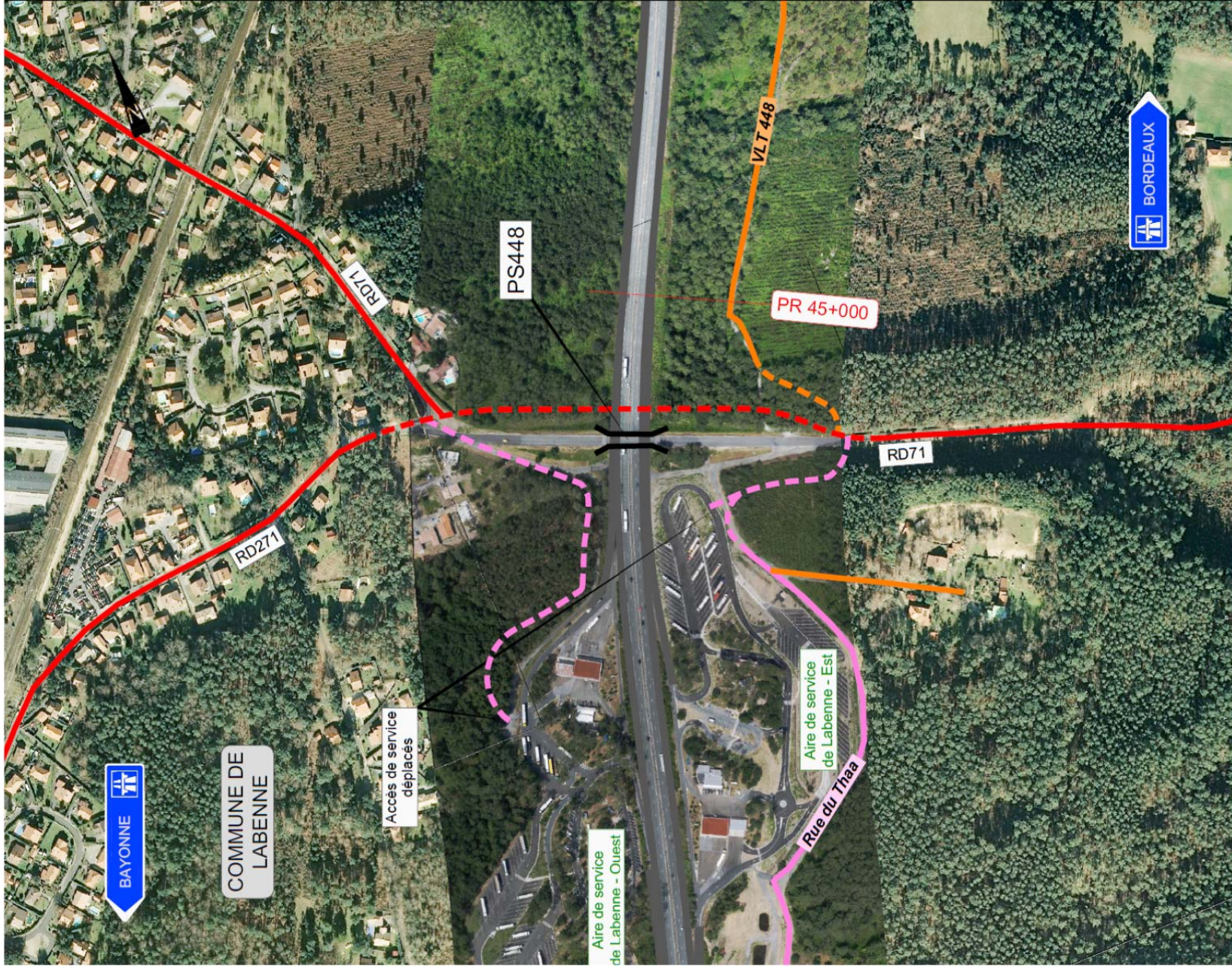
PLAN DE SITUATION



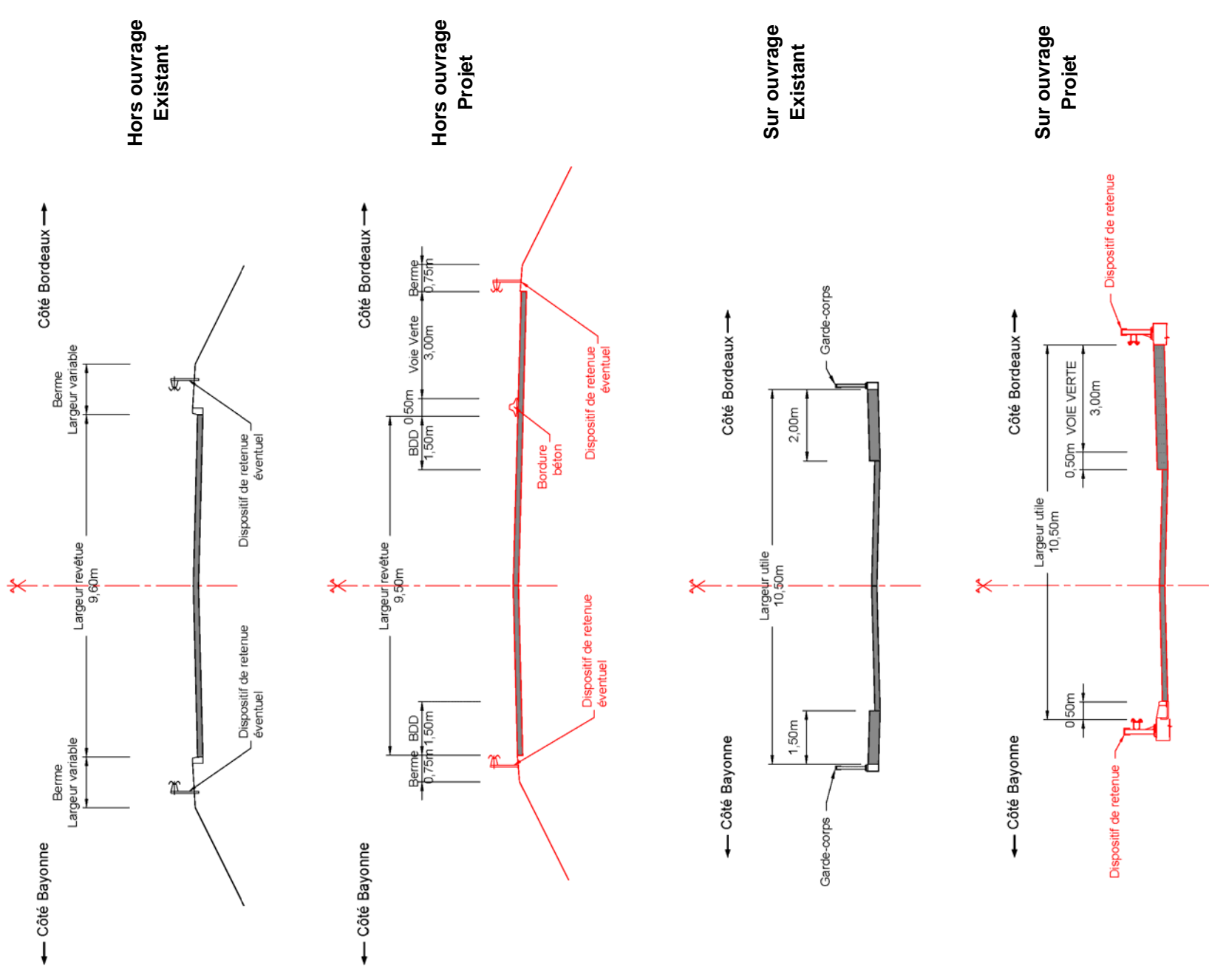
PROFILS EN TRAVERS



PLAN DE SITUATION



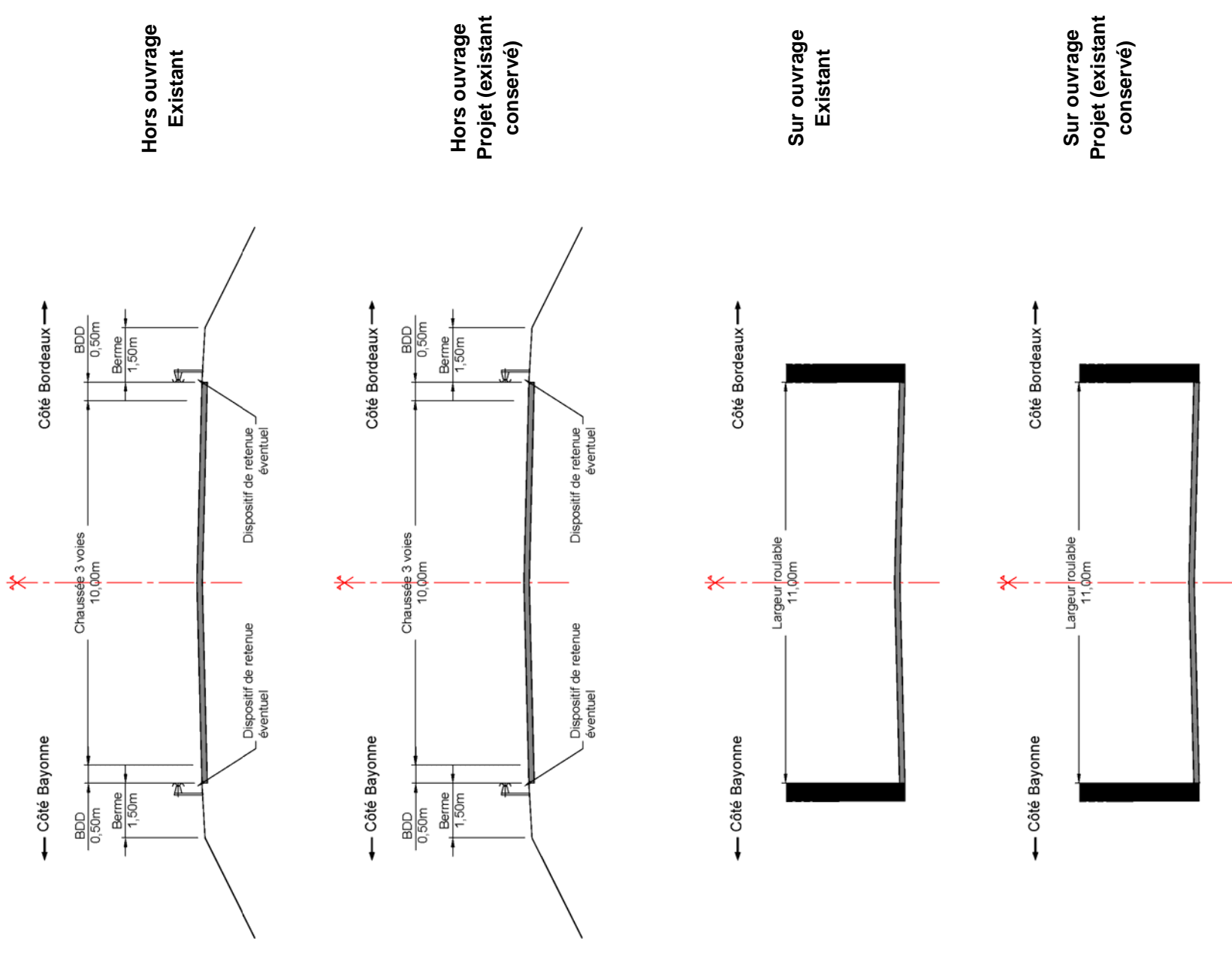
PROFILS EN TRAVERS



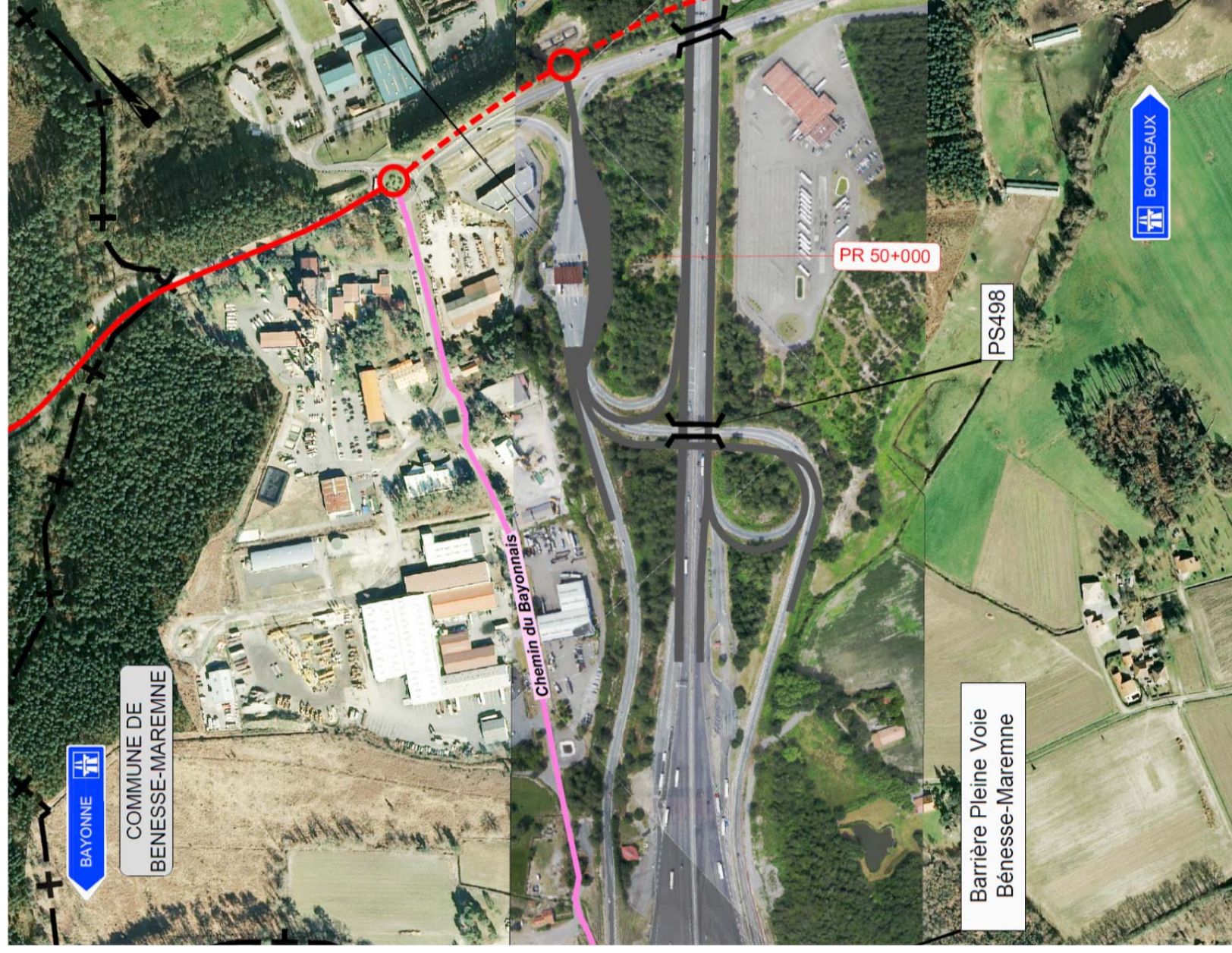
PLAN DE SITUATION



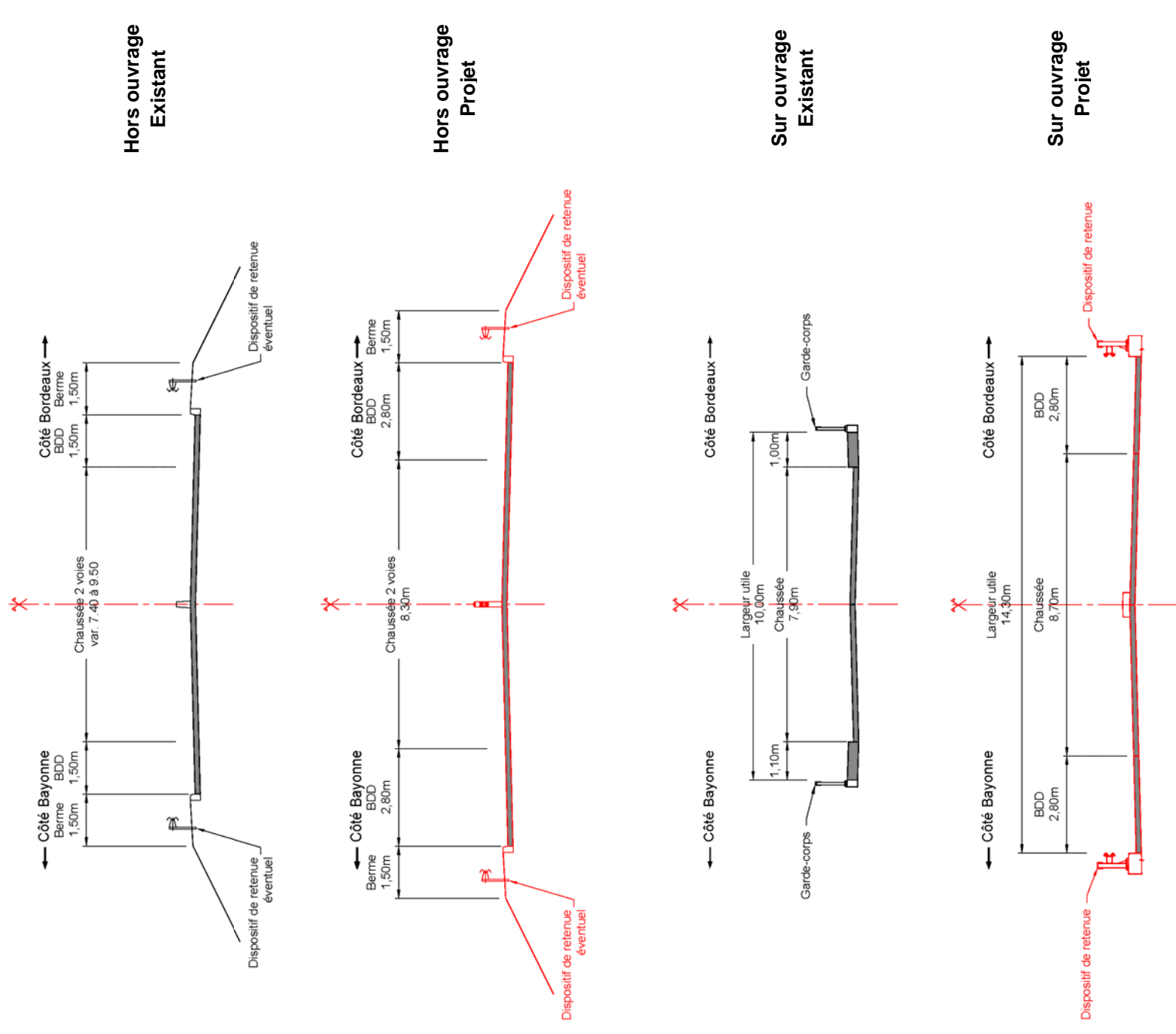
PROFILS EN TRAVERS



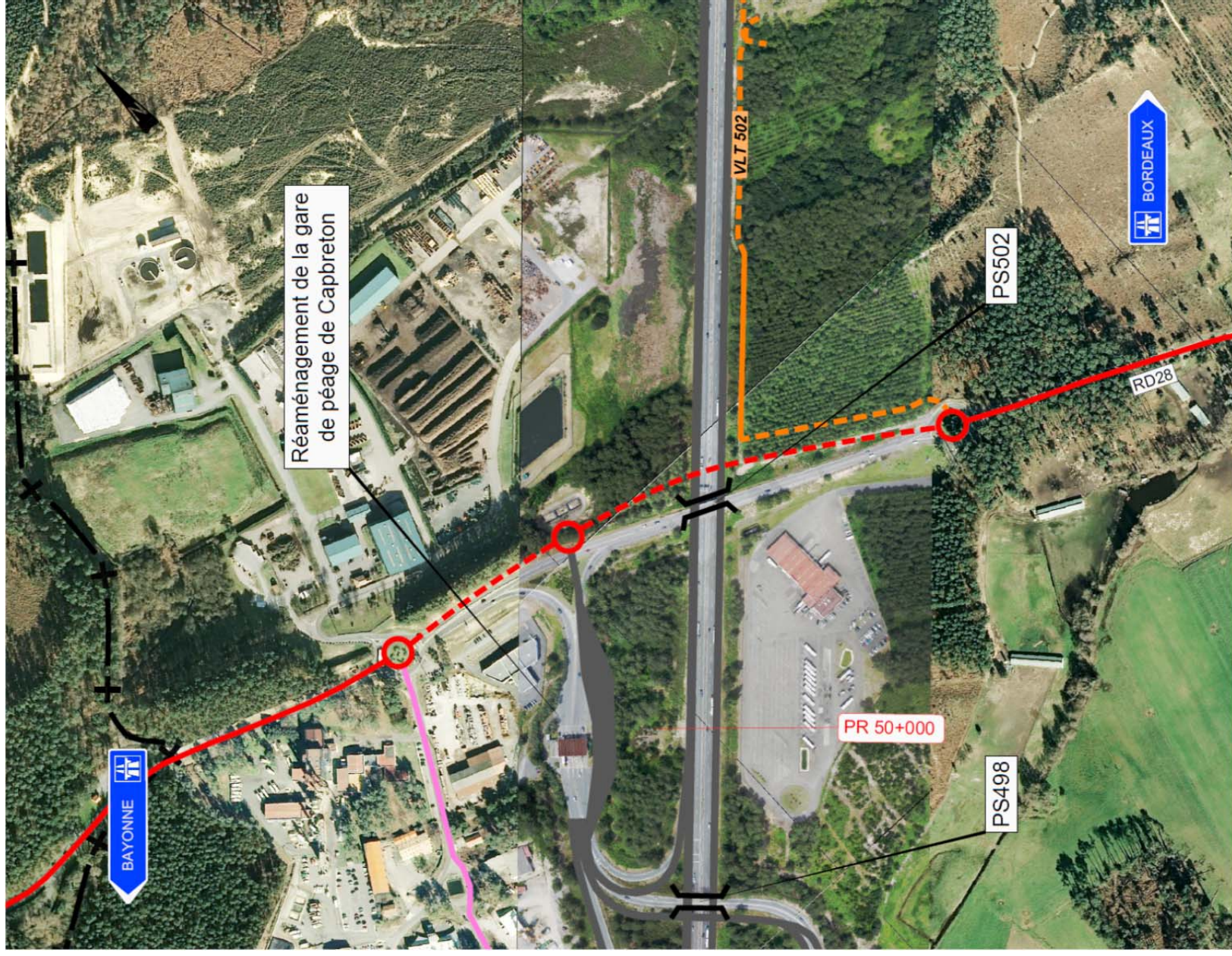
PLAN DE SITUATION



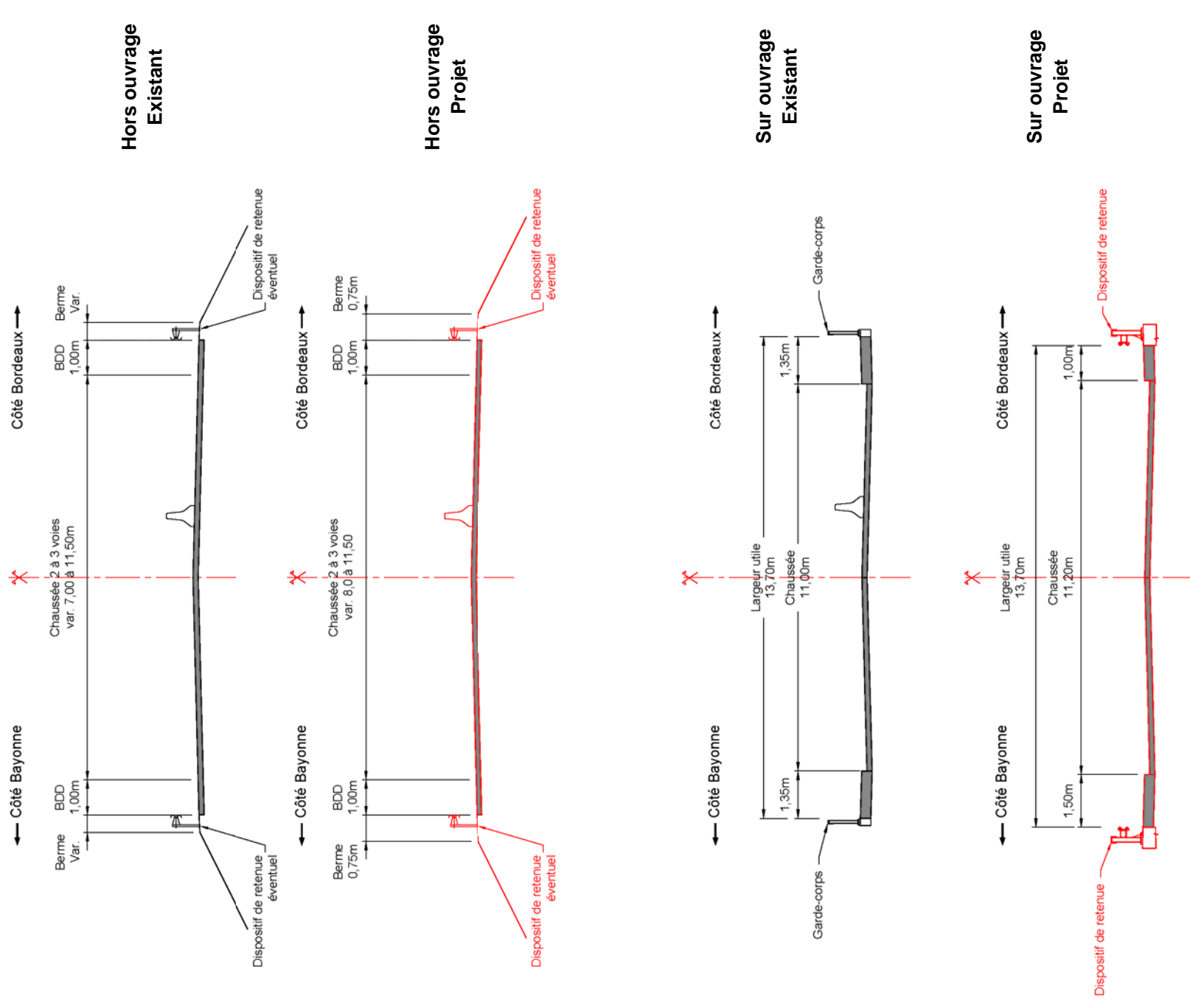
PROFILS EN TRAVERS



PLAN DE SITUATION



PROFILS EN TRAVERS

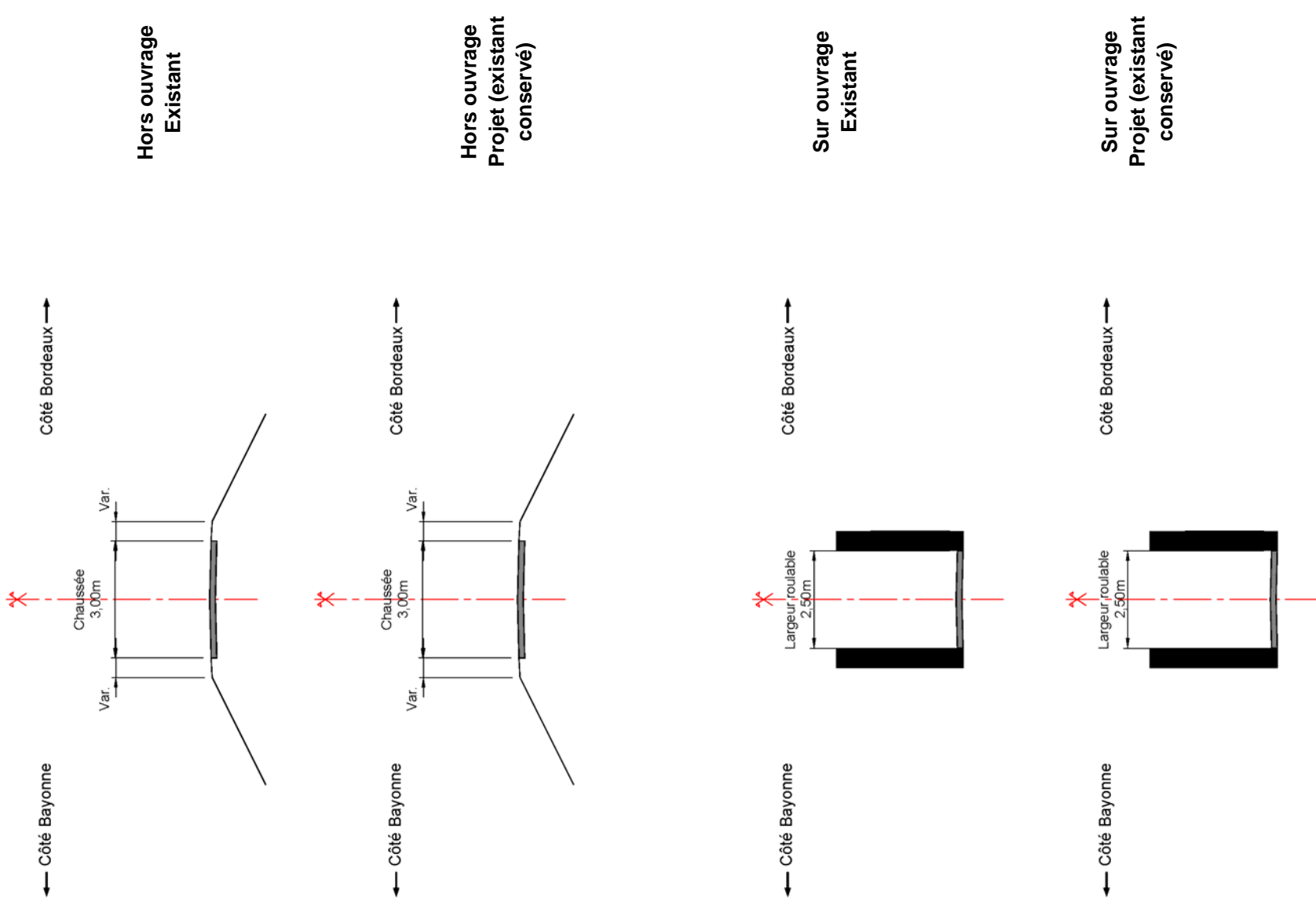




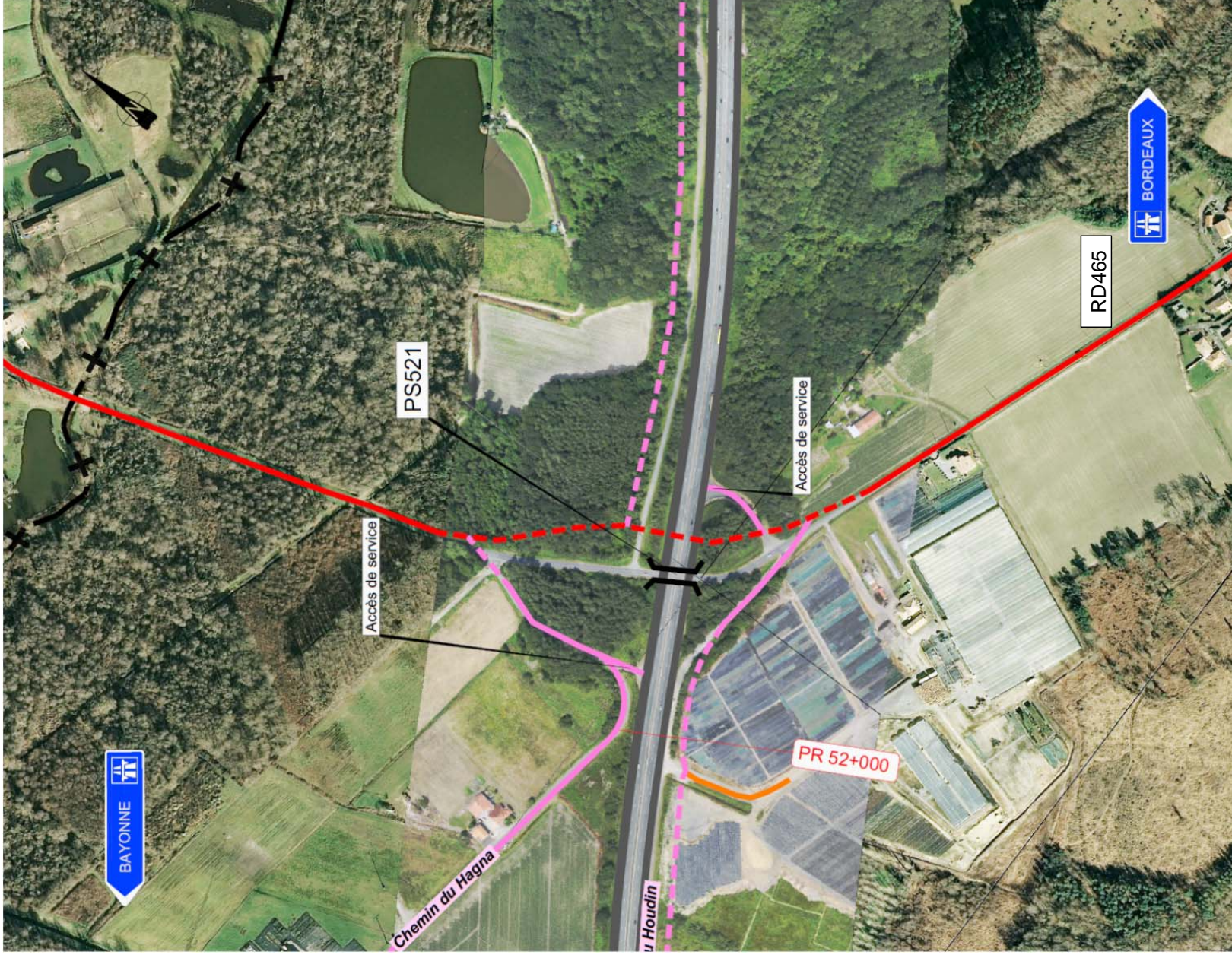
PLAN DE SITUATION



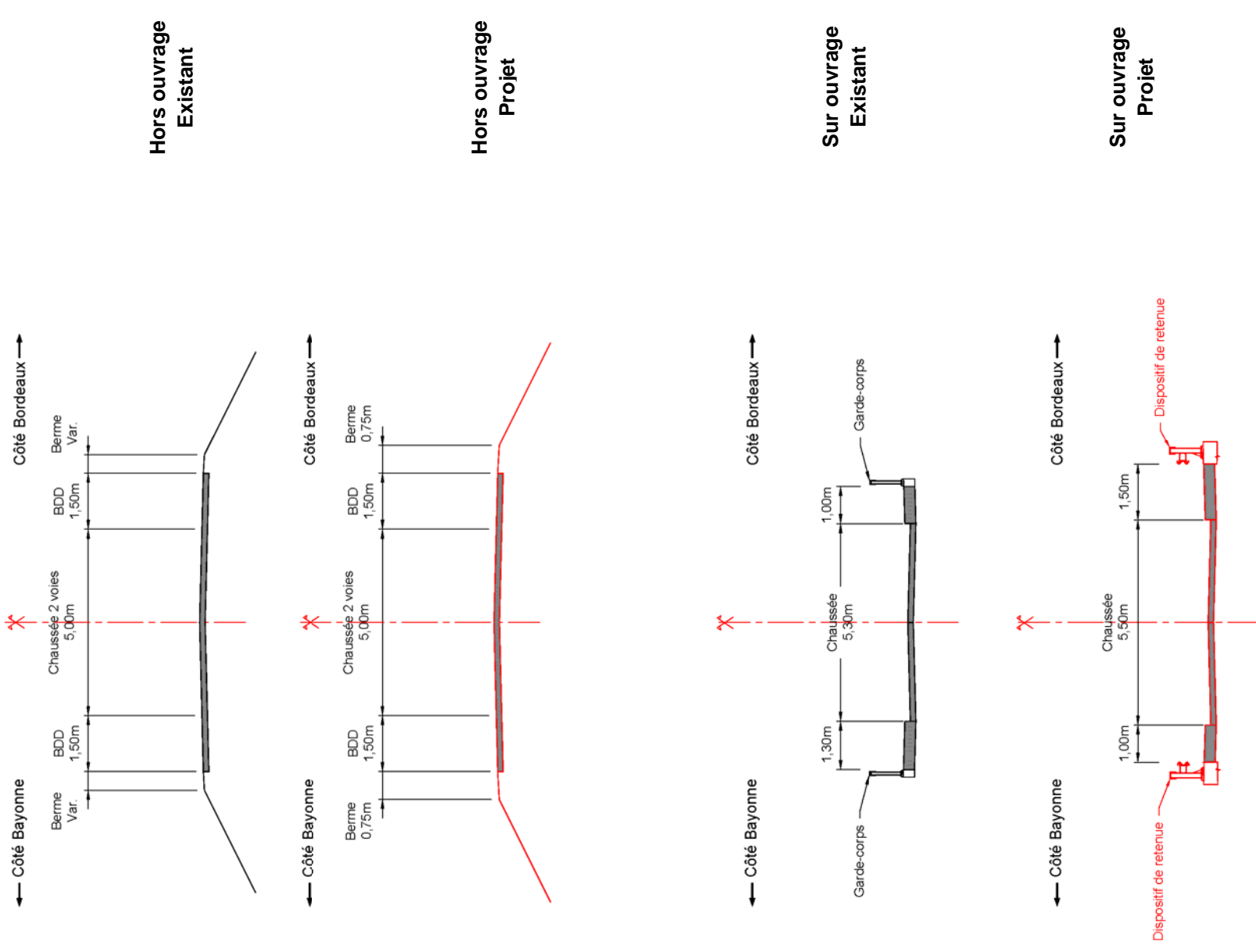
PROFILS EN TRAVERS



PLAN DE SITUATION



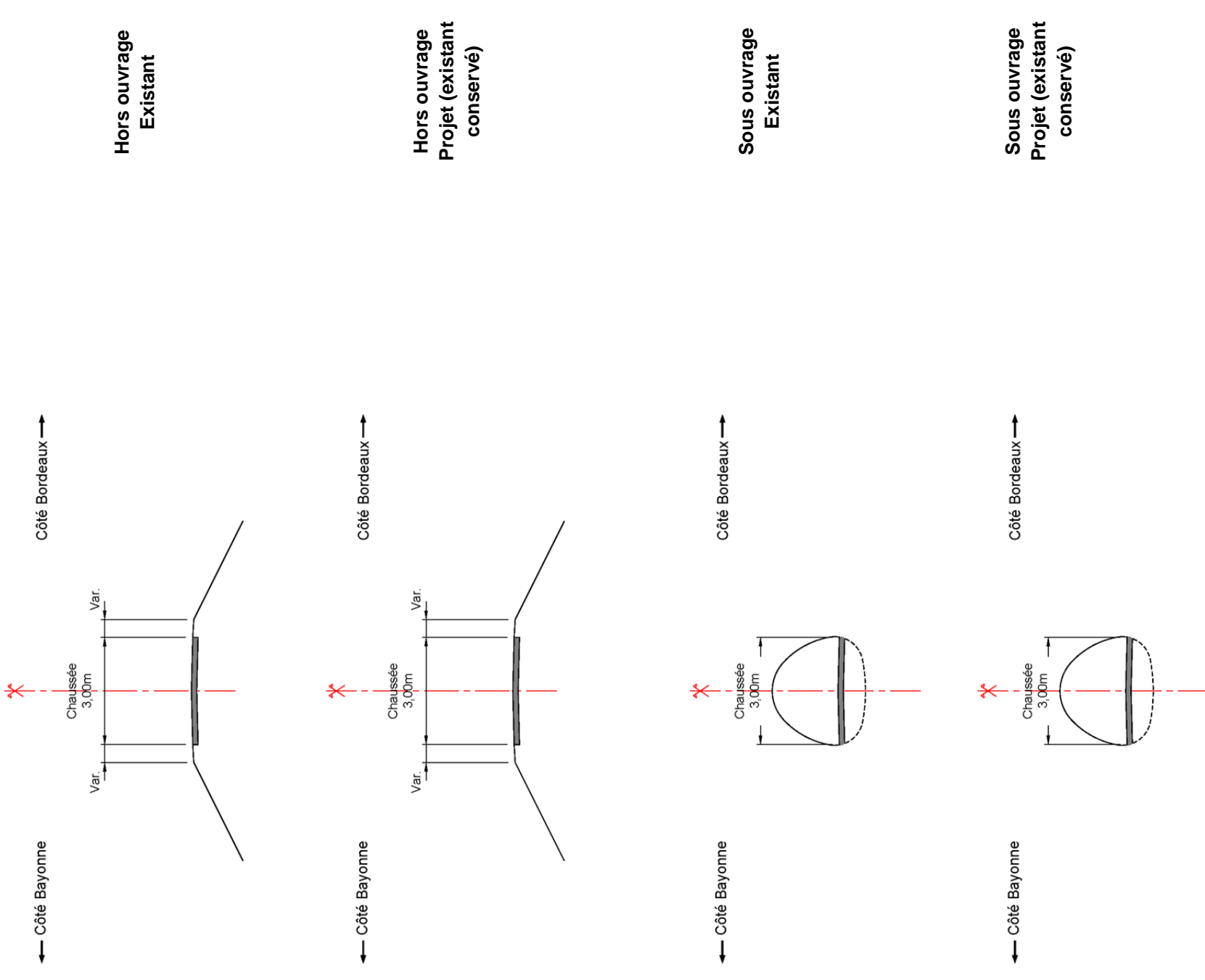
PROFILS EN TRAVERS



PLAN DE SITUATION



PROFILS EN TRAVERS

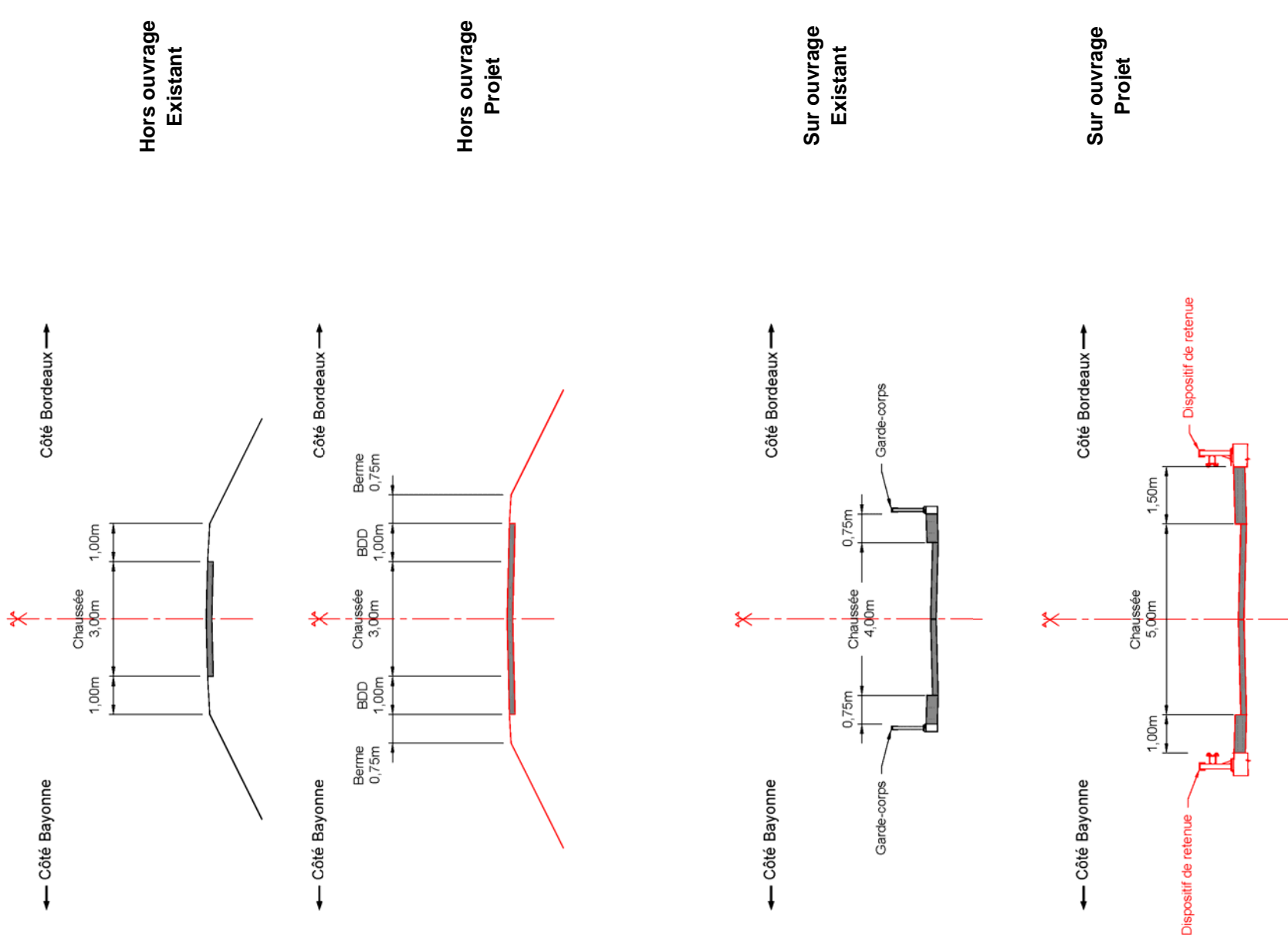


RETABLISSEMENT D'UN CHEMIN RURAL  
SUR LA COMMUNE DE BENESE-MAREMNE  
PASSAGE SUPERIEUR PS548 AU PR 150,6 DE L'A63 (ANCIEN PR 54,8)

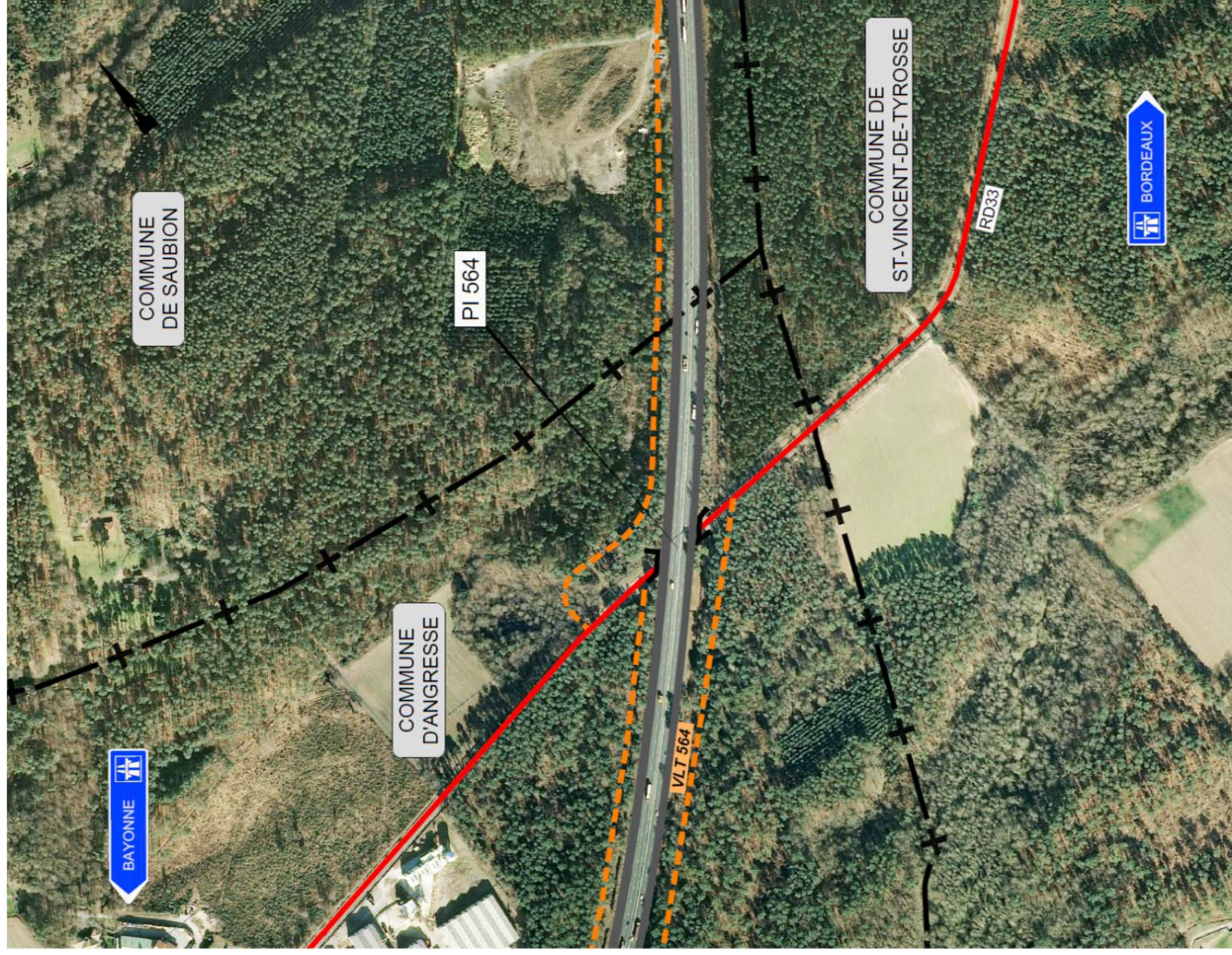
PLAN DE SITUATION



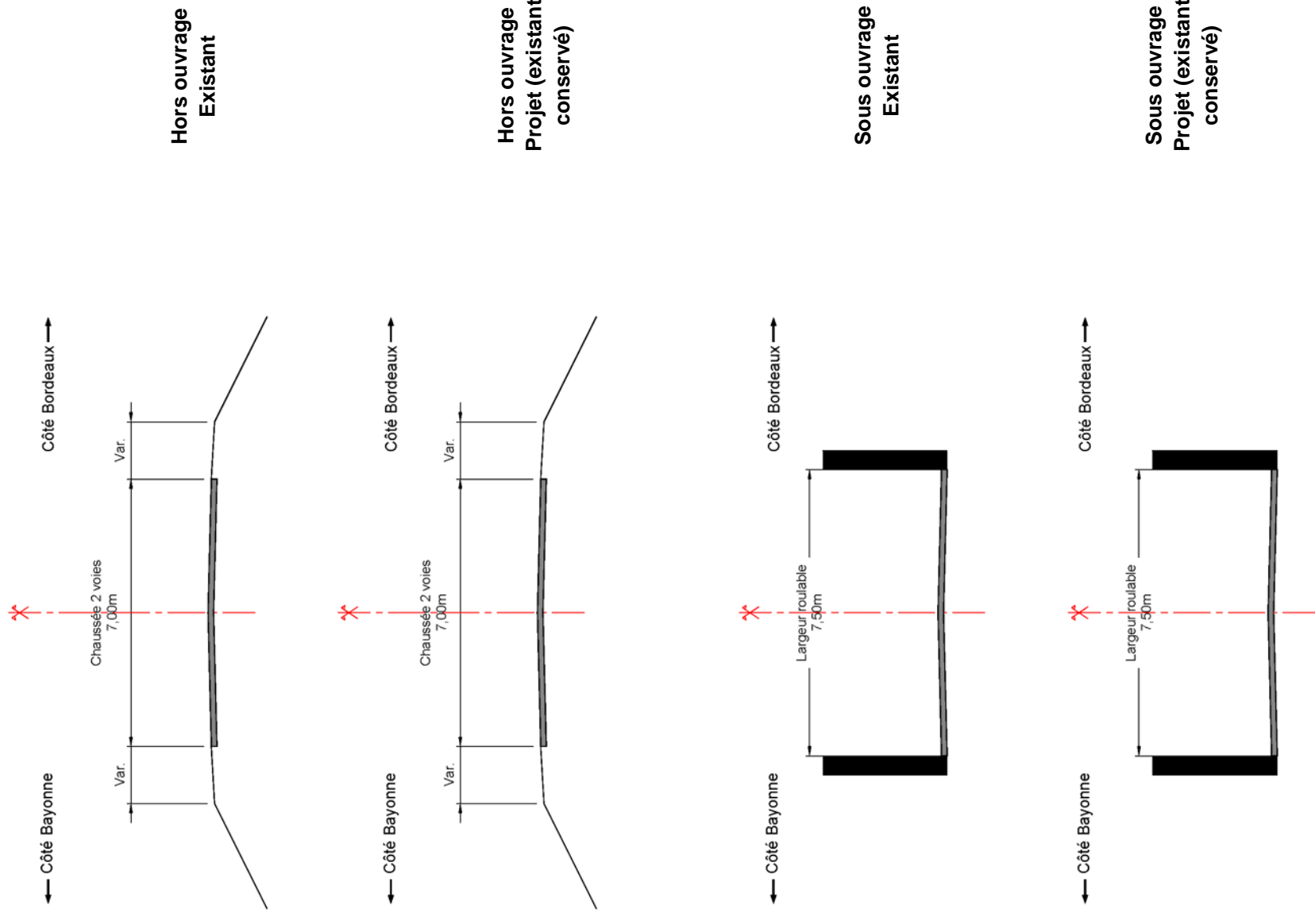
PROFILS EN TRAVERS



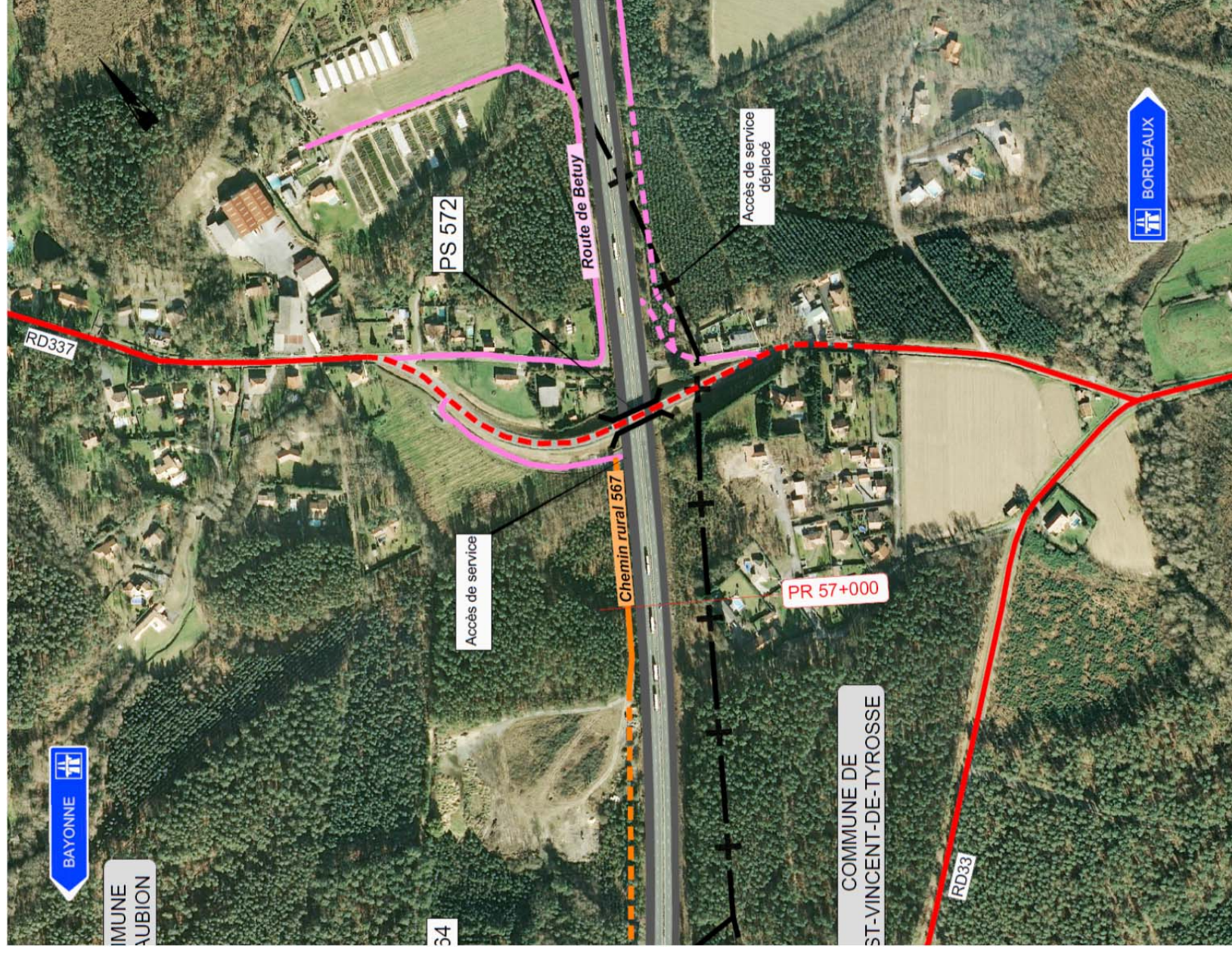
PLAN DE SITUATION



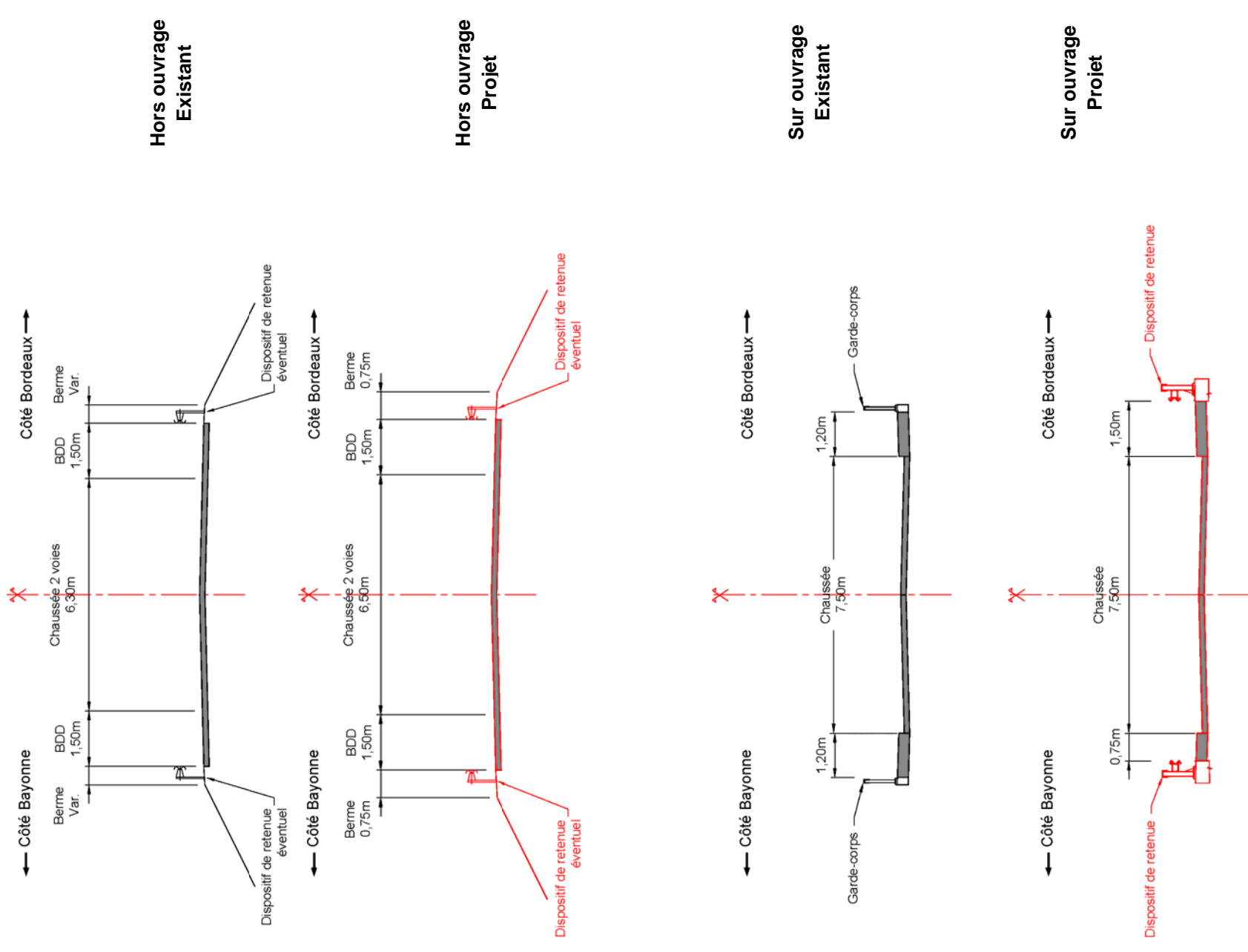
PROFILS EN TRAVERS



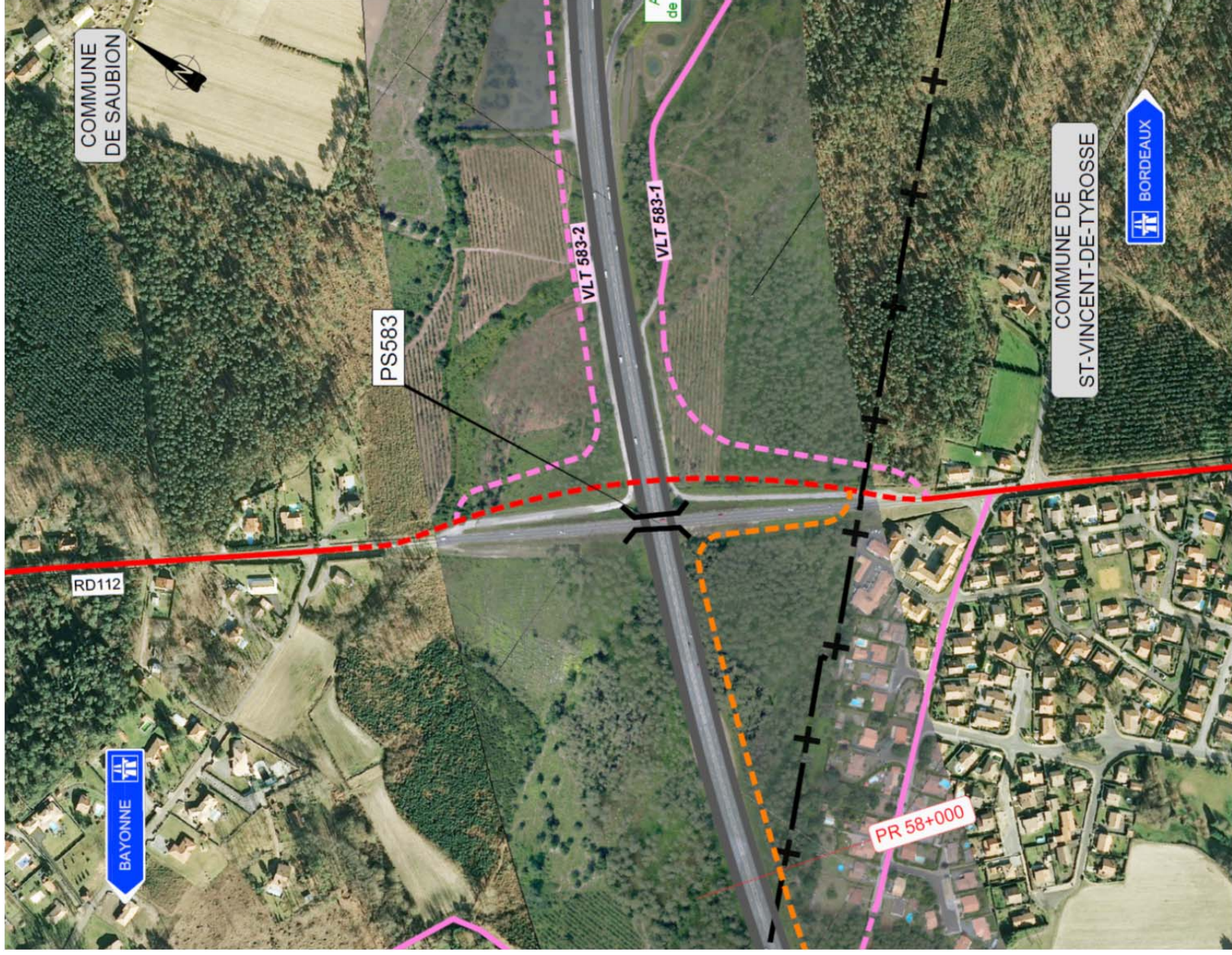
PLAN DE SITUATION



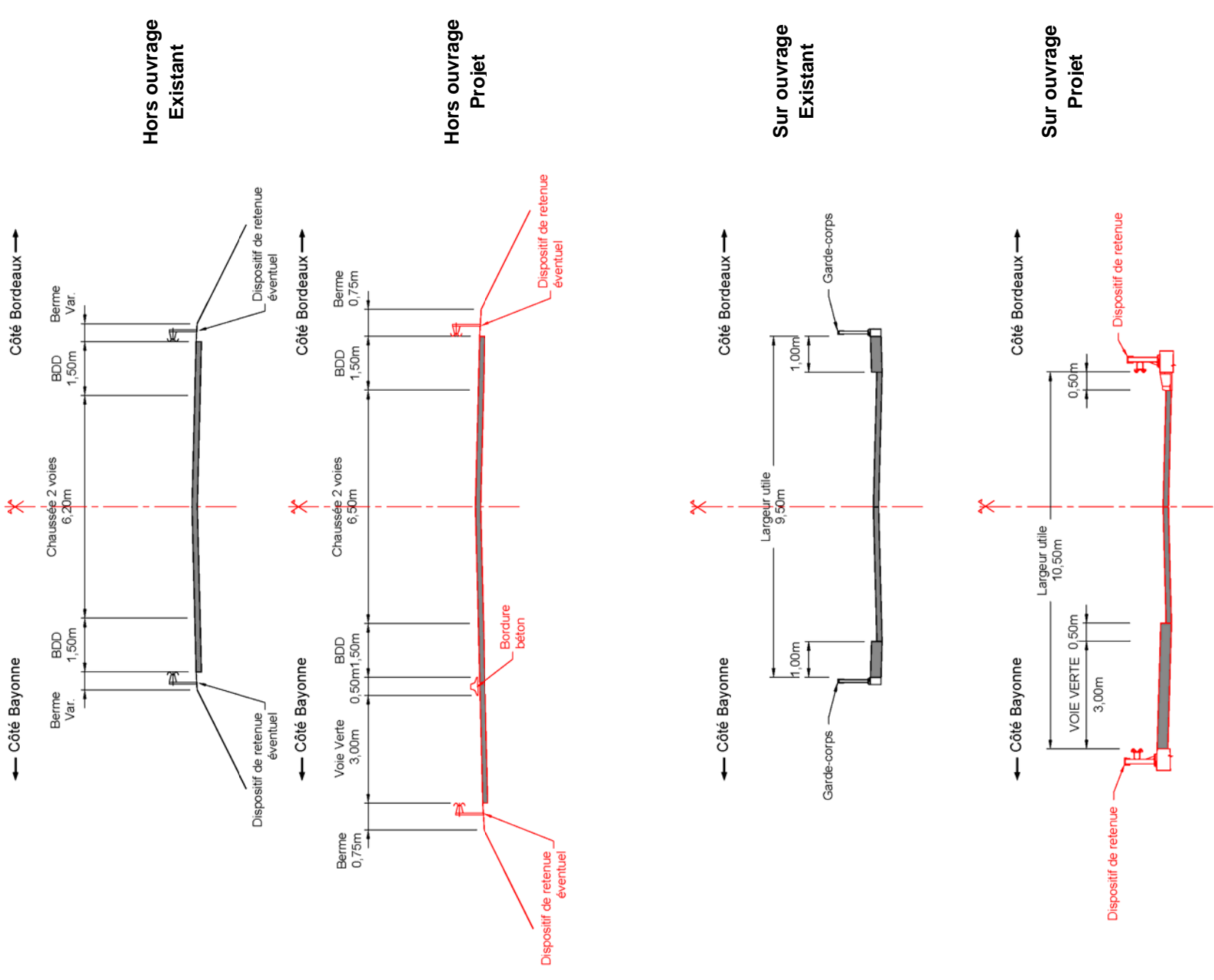
PROFILS EN TRAVERS



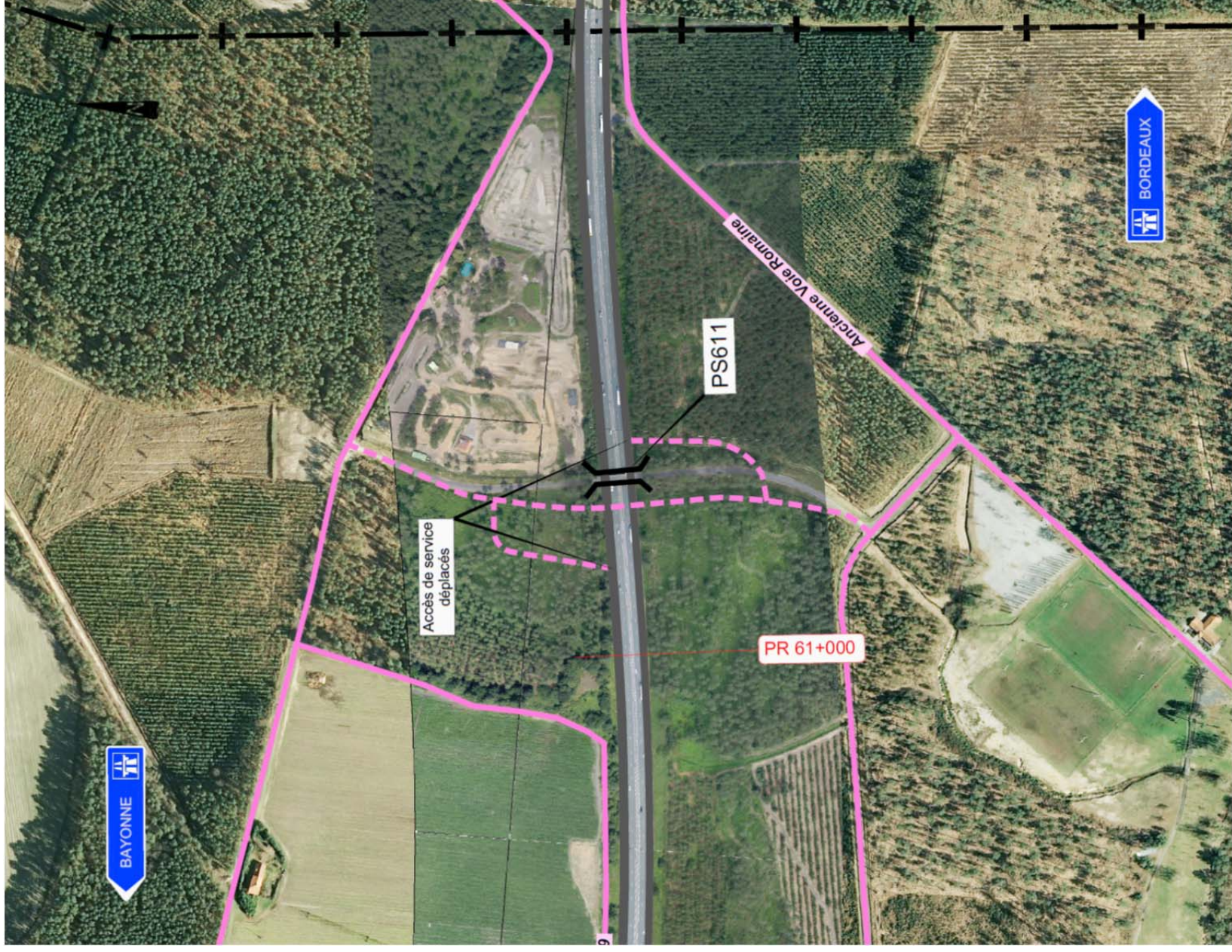
PLAN DE SITUATION



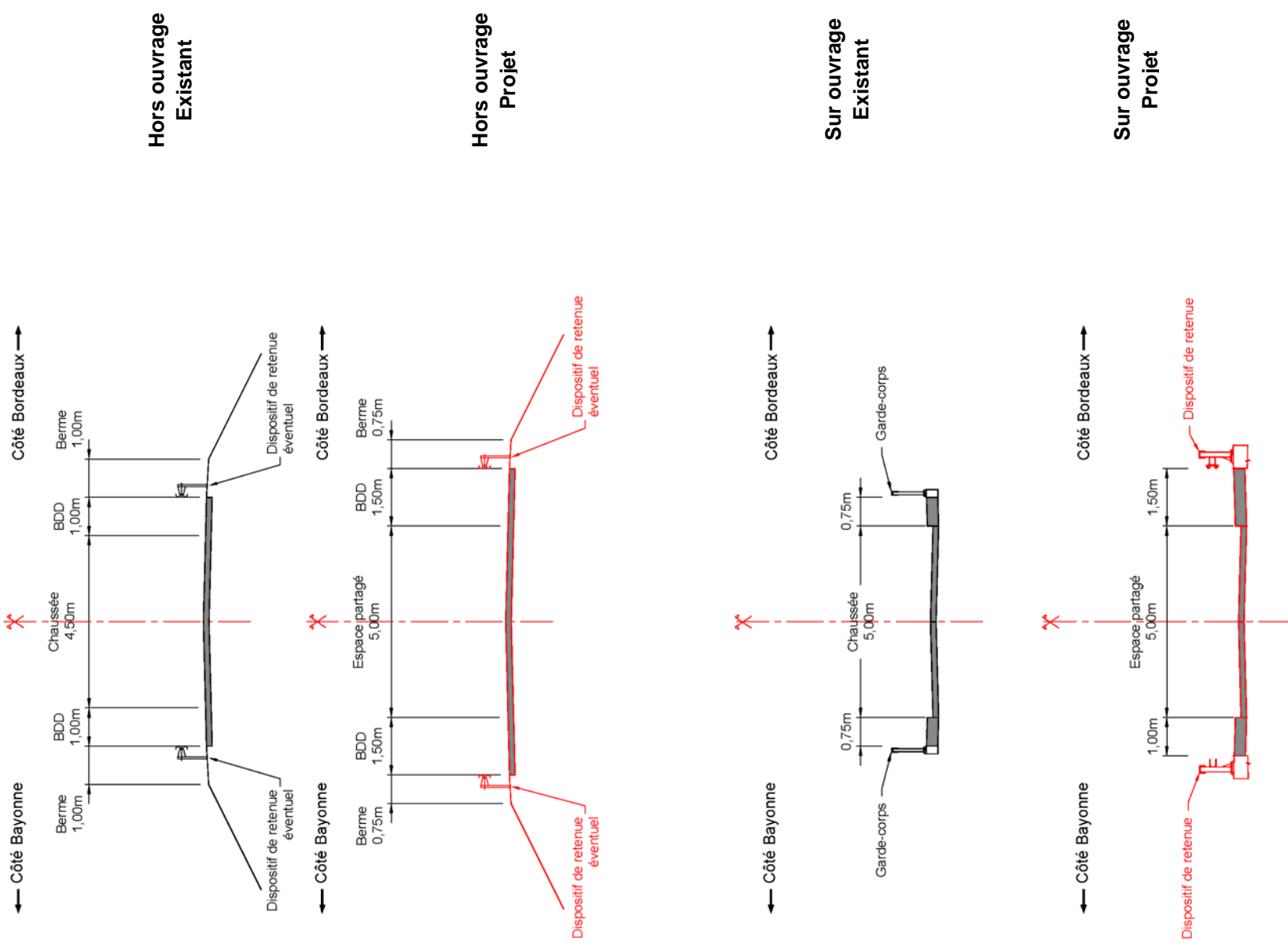
PROFILS EN TRAVERS



PLAN DE SITUATION



PROFILS EN TRAVERS

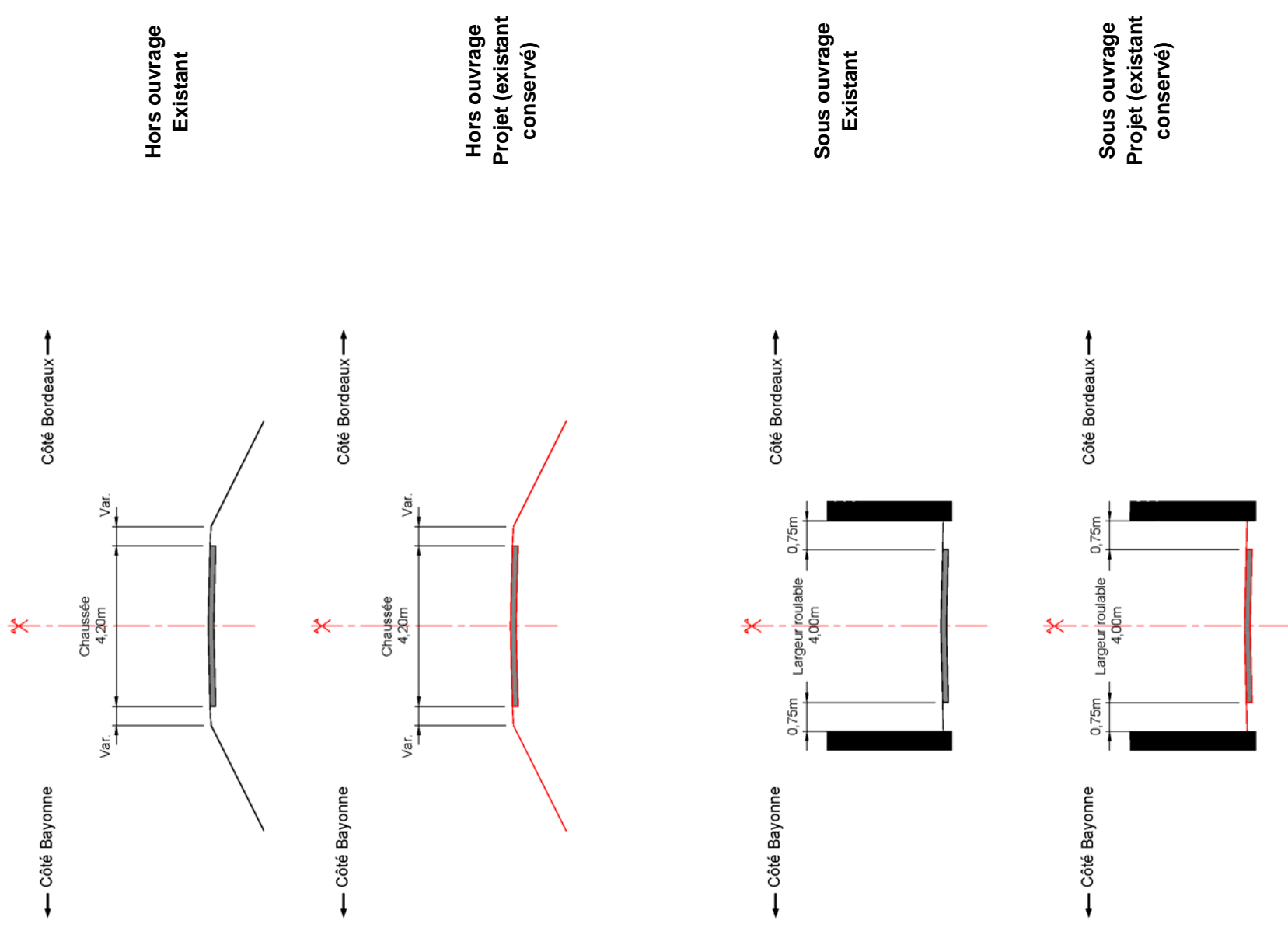




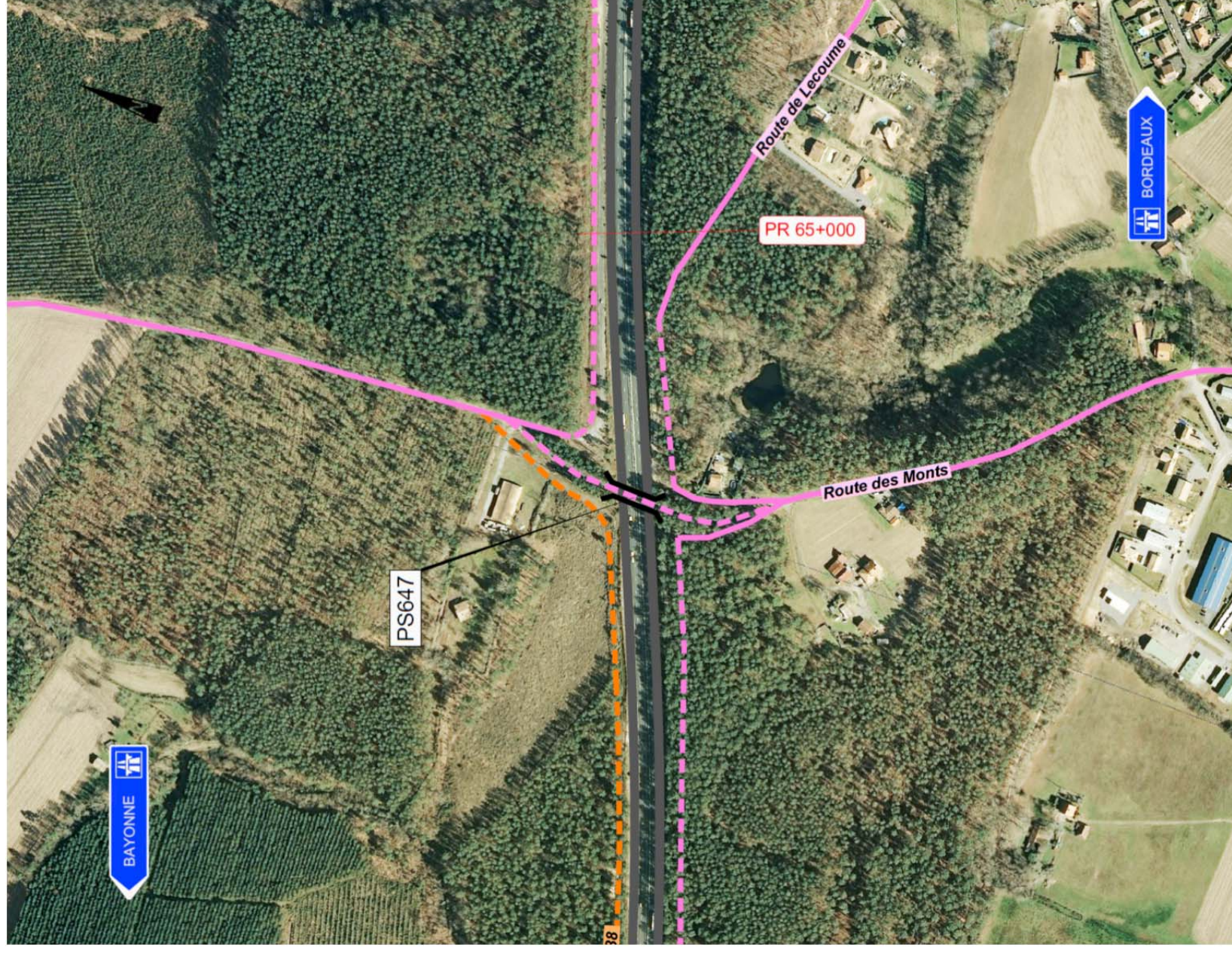
PLAN DE SITUATION



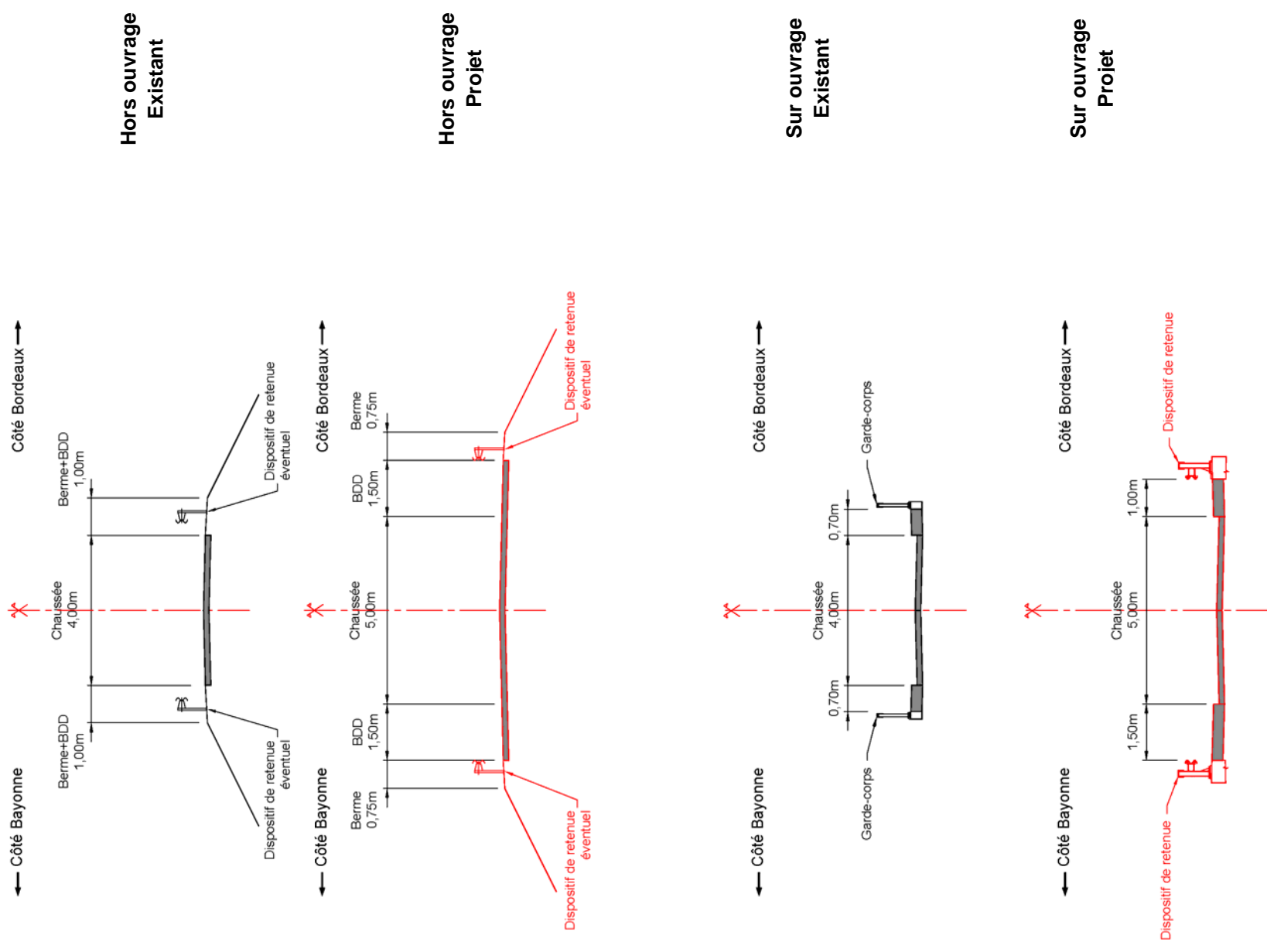
PROFILS EN TRAVERS



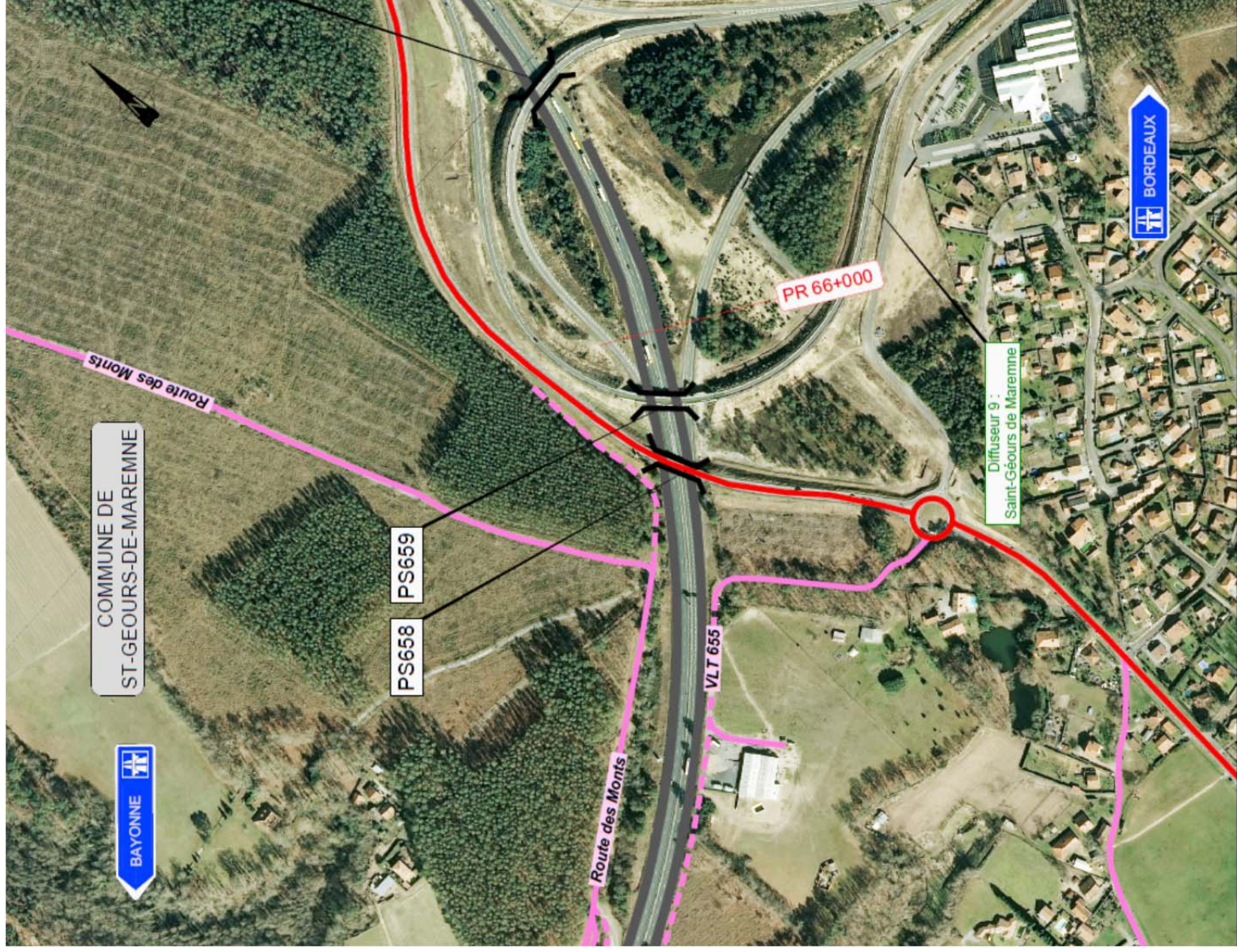
PLAN DE SITUATION



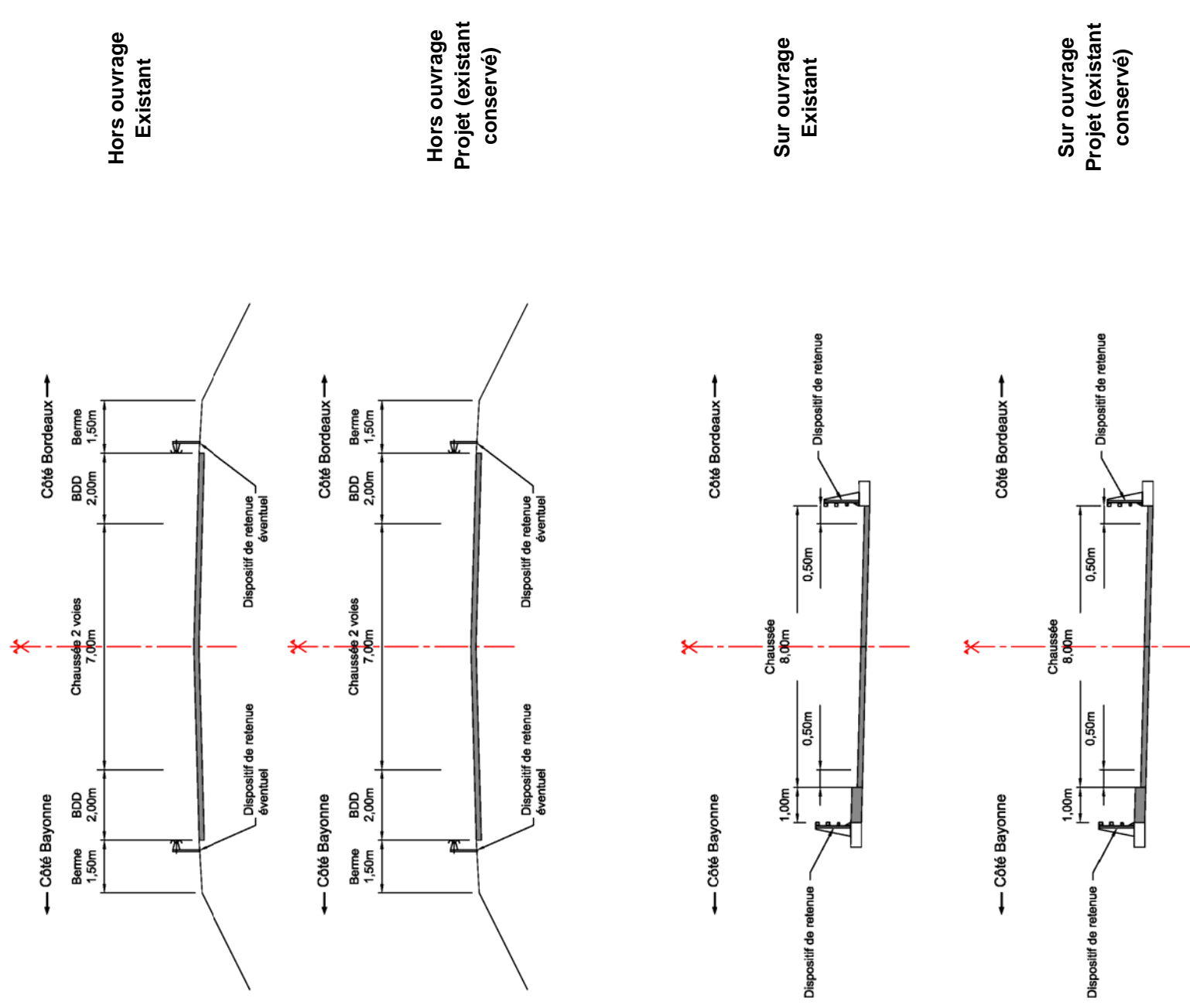
PROFILS EN TRAVERS



PLAN DE SITUATION



PROFILS EN TRAVERS



PLAN DE SITUATION



PROFILS EN TRAVERS

